

ELSPBP1 Polyclonal Antibody

Catalog Number:E-AB-60642

Note: Centrifuge before opening to ensure complete recovery of vial contents.

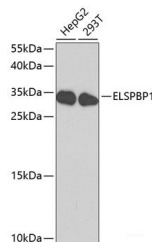
Description

Reactivity	Human
Immunogen	Recombinant fusion protein of human ELSPBP1 (NP_071425.3).
Host	Rabbit
Isotype	IgG
Purification	Affinity purification
Conjugation	Unconjugated
Formulation	PBS with 0.02% sodium azide, 50% glycerol, pH7.3.

Applications Recommended Dilution

WB	1:500-1:2000
-----------	--------------

Data



Western blot analysis of extracts of various cell lines using ELSPBP1 Polyclonal Antibody at dilution of 1:1000.

Observed Mw:34kDa
Calculated Mw:26kDa

Preparation & Storage

Storage Store at -20°C. Avoid freeze / thaw cycles.

Background

The protein encoded by this gene belongs to the sperm-coating protein family of epididymal origin. This protein and its canine homolog are the first known examples of proteins with four tandemly arranged fibronectin type 2 (Fn2) domains in the Fn2-module protein family.

For Research Use Only

A Reliable Research Partner in Life Science and Medicine

Toll-free: 1-888-852-8623

Web: www.elabscience.com

Tel: 1-832-243-6086

Email: techsupport@elabscience.com

Fax: 1-832-243-6017