

KBTBD3 Polyclonal Antibody

Catalog No. E-AB-60643

Note: Centrifuge before opening to ensure complete recovery of vial contents.

Description

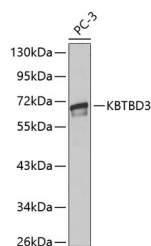
Reactivity	Human
Immunogen	Recombinant fusion protein of mouse KBTBD3 (NP_081238.2).
Host	Rabbit
Isotype	IgG
Purification	Affinity purification
Conjugation	Unconjugated
Buffer	PBS with 0.02% sodium azide, 50% glycerol, pH7.3.

Applications

Recommended Dilution

WB 1:500-1:2000

Data



Western blot analysis of extracts of PC-3 cells using KBTBD3 Polyclonal Antibody.

Observed Mw:69kDa
Calculated Mw:69kDa

Preparation & Storage

Storage Store at -20°C. Avoid freeze / thaw cycles.

Background

KBTBD3 (Kelch Repeat And BTB Domain Containing 3) is a Protein Coding gene. Diseases associated with KBTBD3 include Schizotypal Personality Disorder. An important paralog of this gene is KLHL2.

For Research Use Only