

HCLS1 Polyclonal Antibody

Catalog Number:E-AB-60652

Note: Centrifuge before opening to ensure complete recovery of vial contents.

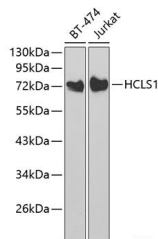
Description

Reactivity	Human,Mouse
Immunogen	Recombinant fusion protein of human HCLS1 (NP_005326.2).
Host	Rabbit
Isotype	IgG
Purification	Affinity purification
Conjugation	Unconjugated
Formulation	PBS with 0.02% sodium azide, 50% glycerol, pH7.3.

Applications Recommended Dilution

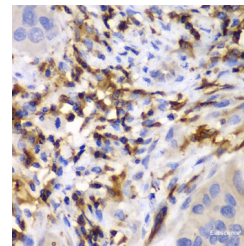
WB	1:500-1:2000
IHC	1:50-1:200

Data

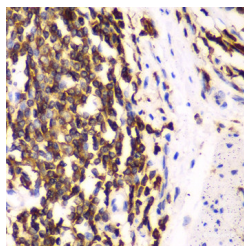


Western blot analysis of extracts of various cell lines using HCLS1 Polyclonal Antibody at dilution of 1:1000.

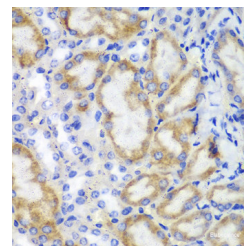
Observed Mw:72kDa
Calculated Mw:24kDa/54kDa



Immunohistochemistry of paraffin-embedded Human liver cancer using HCLS1 Polyclonal Antibody at dilution of 1:100 (40x lens).



Immunohistochemistry of paraffin-embedded Human esophagus using HCLS1 Polyclonal Antibody at dilution of 1:100 (40x lens).



Immunohistochemistry of paraffin-embedded Mouse kidney using HCLS1 Polyclonal Antibody at dilution of 1:100 (40x lens).

Preparation & Storage

Storage Store at -20°C. Avoid freeze / thaw cycles.

Background

HCLS1 (Hematopoietic Cell-Specific Lyn Substrate 1) is a Protein Coding gene. Diseases associated with HCLS1 include Spherocytosis, Type 1. Among its related pathways are Pathogenic Escherichia coli infection and Immune response Fc

For Research Use Only

A Reliable Research Partner in Life Science and Medicine

Toll-free: 1-888-852-8623

Web: www.elabscience.com

Tel: 1-832-243-6086

Email: techsupport@elabscience.com

Fax: 1-832-243-6017

HCLS1 Polyclonal Antibody

Catalog Number:E-AB-60652



epsilon RI pathway. Gene Ontology (GO) annotations related to this gene include protein kinase binding. An important paralog of this gene is CTTN.

For Research Use Only

A Reliable Research Partner in Life Science and Medicine

Toll-free: 1-888-852-8623

Web: www.elabscience.com

Tel: 1-832-243-6086

Email: techsupport@elabscience.com

Fax: 1-832-243-6017