

IRF3 Polyclonal Antibody

Catalog No. E-AB-60657

Note: Centrifuge before opening to ensure complete recovery of vial contents.

Description

Reactivity	Human, Mouse, Rat
Immunogen	A synthetic peptide of human IRF3
Host	Rabbit
Isotype	IgG
Purification	Affinity purification
Conjugation	Unconjugated
Buffer	PBS with 0.02% sodium azide, 50% glycerol, pH7.3.

Applications

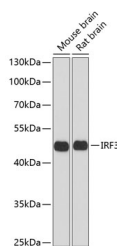
Recommended Dilution

WB 1:500-1:2000 IHC

1:50-1:200 IF

1:50-1:200

Data

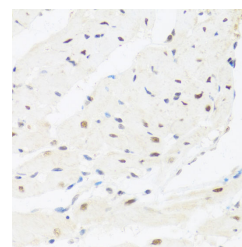


Western blot analysis of extracts of various cell lines using IRF3 Polyclonal Antibody at dilution of 1:1000.

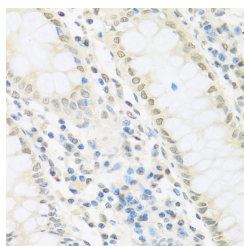
Observed Mw:44kDa

Calculated

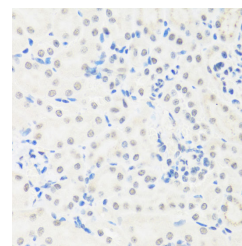
Mw:12kDa/16kDa/33kDa/47kDa/49kDa



Immunohistochemistry of paraffin-embedded Rat heart using IRF3 Polyclonal Antibody at dilution of 1:100 (40x lens).

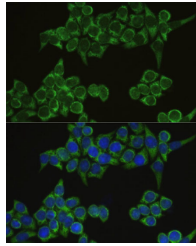


Immunohistochemistry of paraffin-embedded Human colon using IRF3 Polyclonal Antibody at dilution of 1:100 (40x lens).

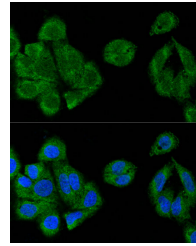


Immunohistochemistry of paraffin-embedded Mouse kidney using IRF3 Polyclonal Antibody at dilution of 1:100 (40x lens).

For Research Use Only



Immunofluorescence analysis of HeLa cells using IRF3 Polyclonal Antibody at dilution of 1:100. Blue: DAPI for nuclear staining.



Confocal immunofluorescence analysis of U-2 OS cells using IRF3 Polyclonal Antibody at dilution of 1:100. Blue: DAPI for nuclear staining.

Preparation & Storage

Storage Store at -20°C. Avoid freeze / thaw cycles.

Background

This gene encodes a member of the interferon regulatory transcription factor (IRF) family. The encoded protein is found in an inactive cytoplasmic form that upon serine/threonine phosphorylation forms a complex with CREBBP. This complex translocates to the nucleus and activates the transcription of interferons alpha and beta, as well as other interferon-induced genes. Alternatively spliced transcript variants encoding multiple isoforms have been observed for this gene.