

KAT2A Polyclonal Antibody

Catalog Number:E-AB-65395

Note: Centrifuge before opening to ensure complete recovery of vial contents.

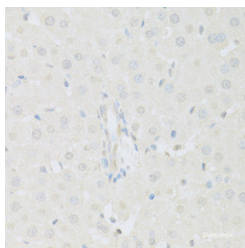
Description

Reactivity	Human,Mouse,Rat
Immunogen	Recombinant fusion protein of human KAT2A (NP_066564.2).
Host	Rabbit
Isotype	IgG
Purification	Affinity purification
Conjugation	Unconjugated
Formulation	PBS with 0.02% sodium azide, 50% glycerol, pH7.3.

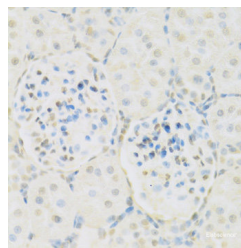
Applications Recommended Dilution

IHC	1:50-1:200
IF	1:50-1:200

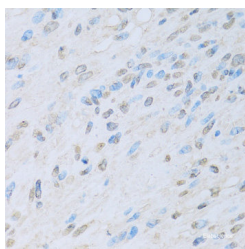
Data



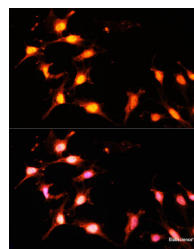
Immunohistochemistry of paraffin-embedded Rat liver using KAT2A Polyclonal Antibody at dilution of 1:100 (40x lens).



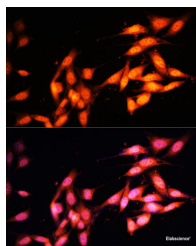
Immunohistochemistry of paraffin-embedded Rat kidney using KAT2A Polyclonal Antibody at dilution of 1:100 (40x lens).



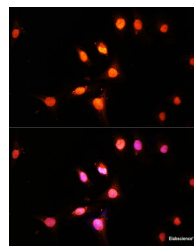
Immunohistochemistry of paraffin-embedded Human liver cancer using KAT2A Polyclonal Antibody at dilution of 1:100 (40x lens).



Immunofluorescence analysis of C6 cells using KAT2A Polyclonal Antibody at dilution of 1:100 (40x lens). Blue: DAPI for nuclear staining.



Immunofluorescence analysis of NIH-3T3 cells using KAT2A Polyclonal Antibody at dilution of 1:100



Immunofluorescence analysis of U-2 OS cells using KAT2A Polyclonal Antibody at dilution of 1:100

For Research Use Only

A Reliable Research Partner in Life Science and Medicine

Toll-free: 1-888-852-8623

Web: www.elabscience.com

Tel: 1-832-243-6086

Email: techsupport@elabscience.com

Fax: 1-832-243-6017

KAT2A Polyclonal Antibody

Catalog Number:E-AB-65395



(40x lens). Blue: DAPI for nuclear staining.

(40x lens). Blue: DAPI for nuclear staining.

Preparation & Storage

Storage Store at -20°C. Avoid freeze / thaw cycles.

Background

KAT2A (Lysine Acetyltransferase 2A) is a Protein Coding gene. Diseases associated with KAT2A include Spinocerebellar Ataxia 7 and Chromosome 16P13.3 Deletion Syndrome, Proximal. Among its related pathways are Chromatin organization and E2F transcription factor network. Gene Ontology (GO) annotations related to this gene include chromatin binding and transcription coactivator activity. An important paralog of this gene is KAT2B.

For Research Use Only

A Reliable Research Partner in Life Science and Medicine

Toll-free: 1-888-852-8623

Web: www.elabscience.com

Tel: 1-832-243-6086

Email: techsupport@elabscience.com

Fax: 1-832-243-6017