

## MTA3 Polyclonal Antibody

Catalog No. E-AB-63721

**Note:** Centrifuge before opening to ensure complete recovery of vial contents.

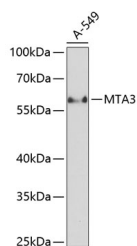
### Description

<b>Reactivity</b>	Human,Mouse
<b>Immunogen</b>	Recombinant fusion protein of human MTA3 (NP_065795.1).
<b>Host</b>	Rabbit
<b>Isotype</b>	IgG
<b>Purification</b>	Affinity purification
<b>Conjugation</b>	Unconjugated
<b>Buffer</b>	PBS with 0.02% sodium azide, 50% glycerol, pH7.3.

### Applications Recommended Dilution

**WB** 1:500-1:2000

### Data



Western blot analysis of extracts of A-549 cells using MTA3 Polyclonal Antibody at dilution of 1:1000.

**Observed Mw:67kDa**  
**Calculated Mw:58kDa/67kDa**

### Preparation & Storage

**Storage** Store at -20°C. Avoid freeze / thaw cycles.

### Background

MTA3 (Metastasis Associated 1 Family Member 3) is a Protein Coding gene. Diseases associated with MTA3 include Gastroesophageal Junction Adenocarcinoma and Vertebral, Cardiac, Renal, And Limb Defects Syndrome 1. Among its related pathways are Preimplantation Embryo and Chromatin organization. Gene Ontology (GO) annotations related to this gene include DNA-binding transcription factor activity and chromatin binding. An important paralog of this gene is MTA1.

### For Research Use Only