

SQLE Polyclonal Antibody

Catalog No. E-AB-63722

Note: Centrifuge before opening to ensure complete recovery of vial contents.

Description

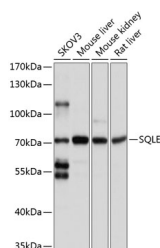
Reactivity	Human, Mouse, Rat
Immunogen	Recombinant fusion protein of human SQLE (NP_003120.2).
Host	Rabbit
Isotype	IgG
Purification	Affinity purification
Conjugation	Unconjugated
Buffer	PBS with 0.02% sodium azide, 50% glycerol, pH7.3.

Applications

Recommended Dilution

WB 1:500-1:2000

Data



Western blot analysis of extracts of various cell lines using SQLE Polyclonal Antibody at dilution of 1:1000.

Observed Mw:71kDa
Calculated Mw:63kDa

Preparation & Storage

Storage Store at -20°C. Avoid freeze / thaw cycles.

Background

Squalene epoxidase catalyzes the first oxygenation step in sterol biosynthesis and is thought to be one of the rate-limiting enzymes in this pathway.

For Research Use Only