

EPB41 Polyclonal Antibody

Catalog No. E-AB-60687

Note: Centrifuge before opening to ensure complete recovery of vial contents.

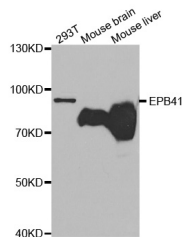
Description

Reactivity	Human, Mouse
Immunogen	Recombinant protein of human EPB41
Host	Rabbit
Isotype	IgG
Purification	Affinity purification
Conjugation	Unconjugated
Buffer	PBS with 0.02% sodium azide and 50% glycerol pH 7.4.

Applications Recommended Dilution

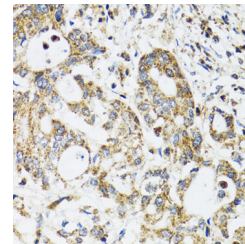
WB 1:500 - 1:2000
IHC 1:50 - 1:200 IF
1:50 - 1:200

Data

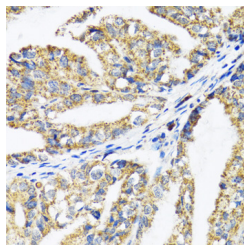


Western blot analysis of extracts of various cell lines with EPB41 Polyclonal Antibody

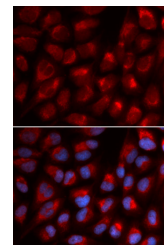
Observed Mw:90kDa
Calculated Mw:63kDa/66kDa/71kDa/81kDa/86kDa/93kDa/97kDa



Immunohistochemistry of paraffin-embedded human colon carcinoma with EPB41 Polyclonal Antibody



Immunohistochemistry of paraffin-embedded human gastric cancer with EPB41 Polyclonal Antibody



Immunofluorescence analysis of U2OS cells with EPB41 Polyclonal Antibody

Preparation & Storage

Storage Store at -20°C. Avoid freeze / thaw cycles.

For Research Use Only

Background

The protein encoded by this gene, together with spectrin and actin, constitute the red cell membrane cytoskeletal network. This complex plays a critical role in erythrocyte shape and deformability. Mutations in this gene are associated with type 1 elliptocytosis (EL1). Alternatively spliced transcript variants encoding different isoforms have been described for this gene.