

## TGFBI Polyclonal Antibody

**Catalog No.** E-AB-60732

*Note:* Centrifuge before opening to ensure complete recovery of vial contents.

### Description

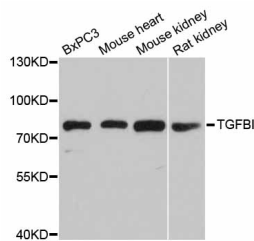
<b>Reactivity</b>	Human, Mouse, Rat
<b>Immunogen</b>	Recombinant protein of human TGFBI
<b>Host</b>	Rabbit
<b>Isotype</b>	IgG
<b>Purification</b>	Affinity purification
<b>Conjugation</b>	Unconjugated
<b>Buffer</b>	PBS with 0.02% sodium azide and 50% glycerol pH 7.4.

### Applications Recommended Dilution

**WB 1:500 - 1:2000**

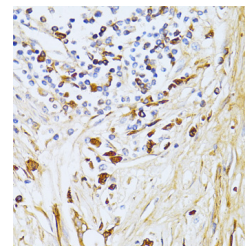
**IHC 1:50 - 1:200**

### Data



Western blot analysis of extracts of various cell lines with TGFBI Polyclonal Antibody

**Observed Mw:75kDa**  
**Calculated Mw:74kDa**



Immunohistochemistry of paraffin-embedded human gastric cancer with TGFBI Polyclonal Antibody

### Preparation & Storage

**Storage** Store at -20°C. Avoid freeze / thaw cycles.

### Background

This gene encodes an RGD-containing protein that binds to type I, II and IV collagens. The RGD motif is found in many extracellular matrix proteins modulating cell adhesion and serves as a ligand recognition sequence for several integrins. This protein plays a role in cell-collagen interactions and may be involved in endochondrial bone formation in cartilage. The protein is induced by transforming growth factor-beta and acts to inhibit cell adhesion. Mutations in this gene are associated with multiple types of corneal dystrophy.

### For Research Use Only