

(KO Validated) APEX1 Polyclonal Antibody

Catalog No. E-AB-65409

Note: Centrifuge before opening to ensure complete recovery of vial contents.

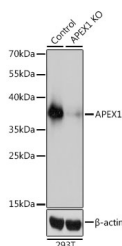
Description

Reactivity	Human
Immunogen	Recombinant fusion protein of human APEX1 (NP_542380.1).
Host	Rabbit
Isotype	IgG
Purification	Affinity purification
Conjugation	Unconjugated
Buffer	PBS with 0.02% sodium azide, 50% glycerol, pH7.3.

Applications Recommended Dilution

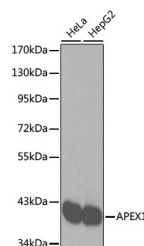
WB	1:500-1:2000
IF	1:50-1:100

Data

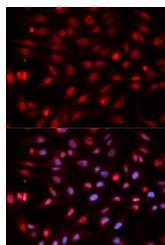


Western blot analysis of extracts from normal (control) and APEX1 knockout (KO) 293T cells using APEX1 Polyclonal Antibody at dilution of 1:3000.

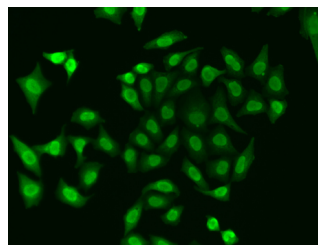
Observed Mw:39kDa
Calculated Mw:35kDa



Western blot analysis of extracts of various cell lines using APEX1 Polyclonal Antibody.



Immunofluorescence analysis of HeLa cells using APEX1 Polyclonal Antibody



Immunofluorescence analysis of A549 cells using APEX1 Polyclonal Antibody

Preparation & Storage

For Research Use Only

Storage Store at -20°C. Avoid freeze / thaw cycles.

Background

Apurinic/aprimidinic (AP) sites occur frequently in DNA molecules by spontaneous hydrolysis, by DNA damaging agents or by DNA glycosylases that remove specific abnormal bases. AP sites are pre-mutagenic lesions that can prevent normal DNA replication so the cell contains systems to identify and repair such sites. Class II AP endonucleases cleave the phosphodiester backbone 5' to the AP site. This gene encodes the major AP endonuclease in human cells. Splice variants have been found for this gene; all encode the same protein.