

Vimentin Polyclonal Antibody

Catalog No. E-AB-60763

Note: Centrifuge before opening to ensure complete recovery of vial contents.

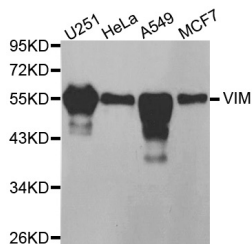
Description

Reactivity	Human
Immunogen	Recombinant protein of human VIM
Host	Rabbit
Isotype	IgG
Purification	Affinity purification
Conjugation	Unconjugated
Buffer	PBS with 0.02% sodium azide and 50% glycerol pH 7.4.

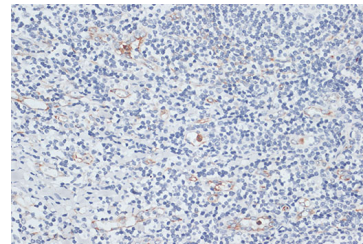
Applications Recommended Dilution

WB 1:500 - 1:1000
IHC 1:50 - 1:100 IF
1:50 - 1:200

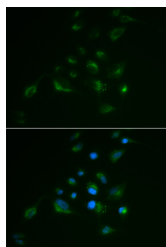
Data



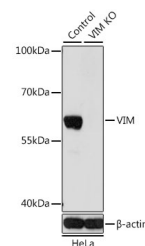
Western blot analysis of extracts of various cell lines with Vimentin Polyclonal Antibody
Observed Mw:55kDa
Calculated Mw:53kDa



Immunohistochemistry of paraffin-embedded human tonsil with Vimentin Polyclonal Antibody



Immunofluorescence analysis of A549 cells with Vimentin Polyclonal Antibody



Western blot analysis of extracts from normal (control) and Vimentin knockout (KO) HeLa cells, using Vimentin Polyclonal Antibody at dilution of 1:200.

Preparation & Storage

For Research Use Only

Storage Store at -20°C. Avoid freeze / thaw cycles.

Background

This gene encodes a member of the intermediate filament family. Intermediate filaments, along with microtubules and actin microfilaments, make up the cytoskeleton. The protein encoded by this gene is responsible for maintaining cell shape, integrity of the cytoplasm, and stabilizing cytoskeletal interactions. It is also involved in the immune response, and controls the transport of low-density lipoprotein (LDL)-derived cholesterol from a lysosome to the site of esterification. It functions as an organizer of a number of critical proteins involved in attachment, migration, and cell signaling. Mutations in this gene causes a dominant, pulverulent cataract.

For Research Use Only