

KLK15 Polyclonal Antibody

Catalog Number:E-AB-65415



Note: Centrifuge before opening to ensure complete recovery of vial contents.

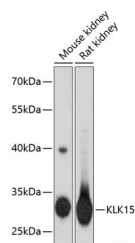
Description

Reactivity	Mouse,Rat
Immunogen	Recombinant fusion protein of human KLK15 (NP_059979.2).
Host	Rabbit
Isotype	IgG
Purification	Affinity purification
Conjugation	Unconjugated
Formulation	PBS with 0.02% sodium azide, 50% glycerol, pH7.3.

Applications Recommended Dilution

WB	1:500-1:2000
-----------	--------------

Data



Western blot analysis of extracts of various cell lines using KLK15 Polyclonal Antibody at dilution of 1:3000.

Observed Mw:28kDa

Calculated Mw:13kDa/17kDa/19kDa/28kDa

Preparation & Storage

Storage Store at -20°C. Avoid freeze / thaw cycles.

Background

Kallikreins are a subgroup of serine proteases having diverse physiological functions. Growing evidence suggests that many kallikreins are implicated in carcinogenesis and some have potential as novel cancer and other disease biomarkers. This gene is one of the fifteen kallikrein subfamily members located in a cluster on chromosome 19. In prostate cancer, this gene has increased expression, which indicates its possible use as a diagnostic or prognostic marker for prostate cancer. The gene contains multiple polyadenylation sites and alternative splicing results in multiple transcript variants encoding distinct isoforms.

For Research Use Only

A Reliable Research Partner in Life Science and Medicine

Toll-free: 1-888-852-8623

Web: www.elabscience.com

Tel: 1-832-243-6086

Email: techsupport@elabscience.com

Fax: 1-832-243-6017