

SUMO3 Polyclonal Antibody

Catalog No. E-AB-60838

Note: Centrifuge before opening to ensure complete recovery of vial contents.

Description

Reactivity	Human,Mouse,Rat
Immunogen	A synthetic peptide of human SUMO3
Host	Rabbit
Isotype	IgG
Purification	Affinity purification
Conjugation	Unconjugated
Buffer	PBS with 0.02% sodium azide, 50% glycerol, pH7.3.

Applications

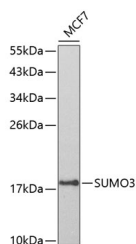
Recommended Dilution

WB 1:1000-1:2000

IHC 1:50-1:100 IF

1:100-1:300

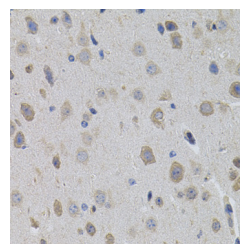
Data



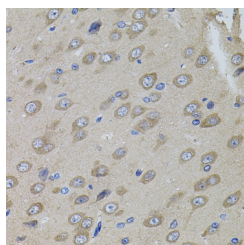
Western blot analysis of extracts of MCF-7 cells using SUMO3 Polyclonal Antibody at dilution of 1:800.

Observed Mw:19kDa

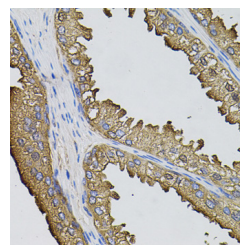
Calculated Mw:11kDa/15kDa



Immunohistochemistry of paraffin-embedded Mouse brain using SUMO3 Polyclonal Antibody

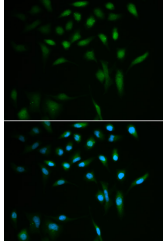


Immunohistochemistry of paraffin-embedded Rat brain using SUMO3 Polyclonal Antibody



Immunohistochemistry of paraffin-embedded Human prostate using SUMO3 Polyclonal Antibody

For Research Use Only



Immunofluorescence analysis of A549 cells using
SUMO3 Polyclonal Antibody

Preparation & Storage

Storage Store at -20°C. Avoid freeze / thaw cycles.

Background

This gene encodes a member of the small ubiquitin-related modifier (SUMO) family of eukaryotic proteins. The encoded protein is covalently conjugated to other proteins via a post-translation modification known as sumoylation. Sumoylation may play a role in a wide variety of cellular processes, including nuclear transport, DNA replication and repair, mitosis, transcriptional regulation, and signal transduction. Alternatively spliced transcript variants encoding distinct proteins have been described.

For Research Use Only