

## NLK Polyclonal Antibody

Catalog No. E-AB-60869

*Note:* Centrifuge before opening to ensure complete recovery of vial contents.

### Description

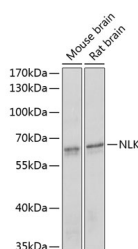
<b>Reactivity</b>	Human, Mouse, Rat
<b>Immunogen</b>	Recombinant fusion protein of human NLK (NP_057315.3).
<b>Host</b>	Rabbit
<b>Isotype</b>	IgG
<b>Purification</b>	Affinity purification
<b>Conjugation</b>	Unconjugated
<b>Buffer</b>	PBS with 0.02% sodium azide, 50% glycerol, pH7.3.

### Applications Recommended Dilution

**WB 1:500-1:2000 IHC**

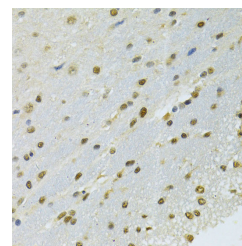
**1:50-1:200**

### Data

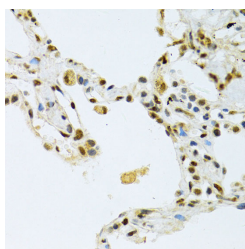


Western blot analysis of extracts of various cell lines using NLK Polyclonal Antibody at dilution of 1:1000.

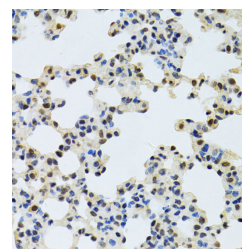
**Observed Mw:68kDa**  
**Calculated Mw:58kDa**



Immunohistochemistry of paraffin-embedded Rat brain using NLK Polyclonal Antibody at dilution of 1:100 (40x lens).



Immunohistochemistry of paraffin-embedded Human lung using NLK Polyclonal Antibody at dilution of 1:100 (40x lens).



Immunohistochemistry of paraffin-embedded Mouse lung using NLK Polyclonal Antibody at dilution of 1:100 (40x lens).

### Preparation & Storage

**Storage** Store at -20°C. Avoid freeze / thaw cycles.

### For Research Use Only

## Background

NLK (Nemo Like Kinase) is a Protein Coding gene. Among its related pathways are Signaling by GPCR and Regulation of activated PAK-2p34 by proteasome mediated degradation. Gene Ontology (GO) annotations related to this gene include transferase activity, transferring phosphorus-containing groups and protein tyrosine kinase activity. An important paralog of this gene is MAPK7.

---

## For Research Use Only