

SMO Polyclonal Antibody

Catalog No. E-AB-62219

Note: Centrifuge before opening to ensure complete recovery of vial contents.

Description

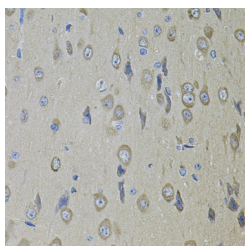
Reactivity	Human,Mouse,Rat
Immunogen	Recombinant fusion protein of human SMO (NP_005622.1).
Host	Rabbit
Isotype	IgG
Purification	Affinity purification
Conjugation	Unconjugated
Buffer	PBS with 0.02% sodium azide, 50% glycerol, pH7.3.

Applications

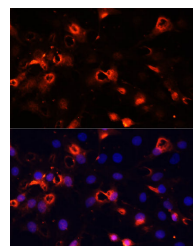
Recommended Dilution

**IHC 1:50-1:100 IF
1:50-1:100**

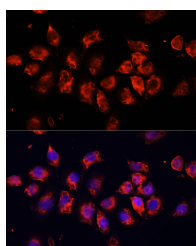
Data



Immunohistochemistry of paraffin-embedded Rat brain using SMO Polyclonal Antibody



Immunofluorescence analysis of C6 cells using SMO Polyclonal Antibody at dilution of 1:100 (40x lens).
Blue: DAPI for nuclear staining.



Immunofluorescence analysis of HeLa cells using SMO Polyclonal Antibody at dilution of 1:100 (40x lens). Blue: DAPI for nuclear staining.

Preparation & Storage

Storage Store at -20°C. Avoid freeze / thaw cycles.

Background

For Research Use Only

The protein encoded by this gene is a G protein-coupled receptor that interacts with the patched protein, a receptor for hedgehog proteins. The encoded protein transduces signals to other proteins after activation by a hedgehog protein/patched protein complex.