

LRPPRC Polyclonal Antibody

Catalog No. E-AB-62333

Note: Centrifuge before opening to ensure complete recovery of vial contents.

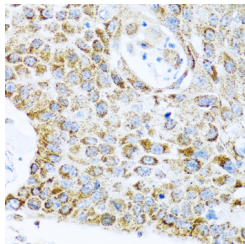
Description

Reactivity	Human,Mouse,Rat
Immunogen	Recombinant fusion protein of human LRPPRC (NP_573566.2).
Host	Rabbit
Isotype	IgG
Purification	Affinity purification
Conjugation	Unconjugated
Buffer	PBS with 0.02% sodium azide, 50% glycerol, pH7.3.

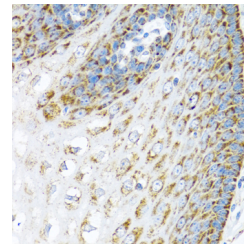
Applications Recommended Dilution

IHC	1:100-1:200
IF	1:100-1:200

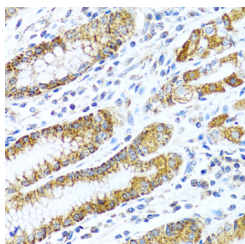
Data



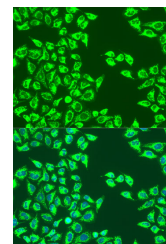
Immunohistochemistry of paraffin-embedded Human lung cancer using LRPPRC Polyclonal Antibody at dilution of 1:100 (40x lens).



Immunohistochemistry of paraffin-embedded Human esophagus using LRPPRC Polyclonal Antibody at dilution of 1:100 (40x lens).

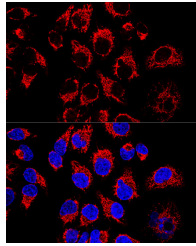


Immunohistochemistry of paraffin-embedded Human stomach using LRPPRC Polyclonal Antibody at dilution of 1:100 (40x lens).

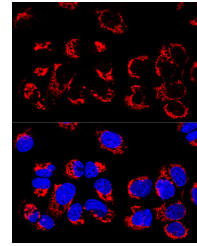


Immunofluorescence analysis of U2OS cells using LRPPRC Polyclonal Antibody at dilution of 1:100. Blue: DAPI for nuclear staining.

For Research Use Only



Confocal immunofluorescence analysis of HeLa cells using LRPPRC Polyclonal Antibody at dilution of 1:400. Blue: DAPI for nuclear staining.



Confocal immunofluorescence analysis of U-2 OS cells using LRPPRC Polyclonal Antibody at dilution of 1:400. Blue: DAPI for nuclear staining.

Preparation & Storage

Storage Store at -20°C. Avoid freeze / thaw cycles.

Background

This gene encodes a leucine-rich protein that has multiple pentatricopeptide repeats (PPR). The precise role of this protein is unknown but studies suggest it may play a role in cytoskeletal organization, vesicular transport, or in transcriptional regulation of both nuclear and mitochondrial genes. The protein localizes primarily to mitochondria and is predicted to have an N-terminal mitochondrial targeting sequence. Mutations in this gene are associated with the French-Canadian type of Leigh syndrome.

For Research Use Only