

C14orf166 Polyclonal Antibody

Catalog No. E-AB-62451

Note: Centrifuge before opening to ensure complete recovery of vial contents.

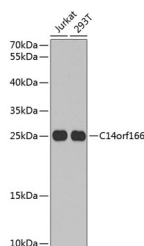
Description

Reactivity	Human,Mouse
Immunogen	Recombinant fusion protein of human C14orf166
Host	Rabbit
Isotype	IgG
Purification	Affinity purification
Conjugation	Unconjugated
Buffer	PBS with 0.02% sodium azide,50% glycerol,pH7.3.

Applications Recommended Dilution

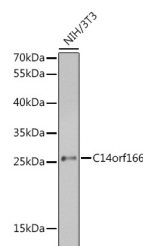
WB 1:500-1:2000

Data



Western blot analysis of extracts of various cell lines using C14orf166 Polyclonal Antibody at 1:1000 dilution.

Observed Mw:25kDa/28kDa
Calculated Mw:28kDa



Western blot analysis of extracts of NIH/3T3 cells using C14orf166 Polyclonal Antibody at 1:1000 dilution.

Preparation & Storage

Storage Store at -20°C. Avoid freeze / thaw cycles.

Background

RNA-binding protein involved in modulation of mRNA transcription by Polymerase II. Component of the tRNA-splicing ligase complex and is required for tRNA ligation. May be required for RNA transport.

For Research Use Only