

(KO Validated) CSPG4 Polyclonal Antibody

Catalog No. E-AB-63747

Note: Centrifuge before opening to ensure complete recovery of vial contents.

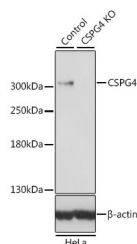
Description

Reactivity	Human, Mouse, Rat
Immunogen	Recombinant fusion protein of human CSPG4 (NP_001888.2).
Host	Rabbit
Isotype	IgG
Purification	Affinity purification
Conjugation	Unconjugated
Buffer	PBS with 0.02% sodium azide, 50% glycerol, pH7.3.

Applications Recommended Dilution

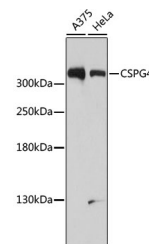
WB 1:500-1:2000

Data



Western blot analysis of extracts from normal (control) and CSPG4 knockout (KO) HeLa cells using CSPG4 Polyclonal Antibody at dilution of 1:500.

Observed Mw:320kDa
Calculated Mw:250kDa



Western blot analysis of extracts of various cell lines using CSPG4 Polyclonal Antibody at dilution of 1:1000.

Preparation & Storage

Storage Store at -20°C. Avoid freeze / thaw cycles.

Background

A human melanoma-associated chondroitin sulfate proteoglycan plays a role in stabilizing cell-substratum interactions during early events of melanoma cell spreading on endothelial basement membranes. CSPG4 represents an integral membrane chondroitin sulfate proteoglycan expressed by human malignant melanoma cells.

For Research Use Only