

## RAB31 Polyclonal Antibody

**Catalog No.** E-AB-65448

*Note:* Centrifuge before opening to ensure complete recovery of vial contents.

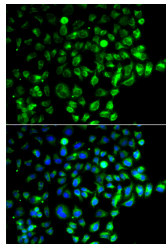
### Description

<b>Reactivity</b>	Human,Mouse,Rat
<b>Immunogen</b>	Recombinant fusion protein of human RAB31 (NP_006859.2).
<b>Host</b>	Rabbit
<b>Isotype</b>	IgG
<b>Purification</b>	Affinity purification
<b>Conjugation</b>	Unconjugated
<b>Buffer</b>	PBS with 0.02% sodium azide, 50% glycerol, pH7.3.

### Applications Recommended Dilution

**IF** 1:50-1:200

### Data



Immunofluorescence analysis of A549 cells using RAB31 Polyclonal Antibody

### Preparation & Storage

**Storage** Store at -20°C. Avoid freeze / thaw cycles.

### Background

RAB31 (RAB31, Member RAS Oncogene Family) is a Protein Coding gene. Diseases associated with RAB31 include Estrogen-Receptor Positive Breast Cancer and Choroid Cancer. Among its related pathways are RAB GEFs exchange GTP for GDP on RABs and Metabolism of proteins. Gene Ontology (GO) annotations related to this gene include GTP binding and GDP binding. An important paralog of this gene is RAB22A.

### For Research Use Only