

## CPA1 Polyclonal Antibody

Catalog No. E-AB-62691

*Note:* Centrifuge before opening to ensure complete recovery of vial contents.

### Description

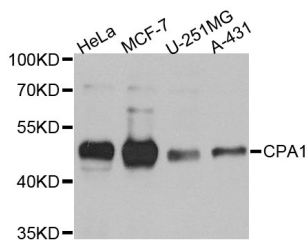
<b>Reactivity</b>	Human, Mouse, Rat
<b>Immunogen</b>	Recombinant protein of human CPA1
<b>Host</b>	Rabbit
<b>Isotype</b>	IgG
<b>Purification</b>	Affinity purification
<b>Conjugation</b>	Unconjugated
<b>Buffer</b>	PBS with 0.02% sodium azide and 50% glycerol pH 7.4.

### Applications Recommended Dilution

**WB 1:500 - 1:2000**

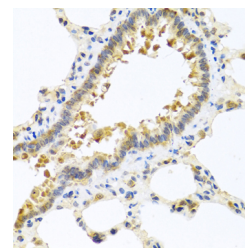
**IHC 1:50 - 1:100**

### Data

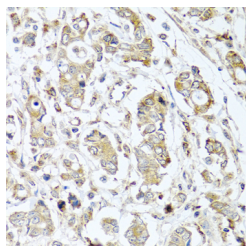


Western blot analysis of extracts of various cell lines with CPA1 Polyclonal Antibody

**Observed Mw:47kDa**  
**Calculated Mw:47kDa**



Immunohistochemistry of paraffin-embedded rat lung with CPA1 Polyclonal Antibody



Immunohistochemistry of paraffin-embedded human gastric cancer with CPA1 Polyclonal Antibody

### Preparation & Storage

**Storage** Store at -20°C. Avoid freeze / thaw cycles.

### Background

### For Research Use Only

This gene encodes a member of the carboxypeptidase A family of zinc metalloproteases. This enzyme is produced in the pancreas and preferentially cleaves C-terminal branched-chain and aromatic amino acids from dietary proteins. This gene and several family members are present in a gene cluster on chromosome 7. Mutations in this gene may be linked to chronic pancreatitis, while elevated protein levels may be associated with pancreatic cancer.