

Note: Centrifuge before opening to ensure complete recovery of vial contents.

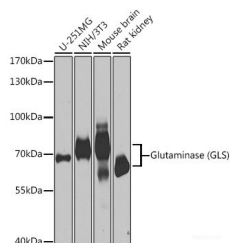
Description

Reactivity	Human,Mouse,Rat
Immunogen	Recombinant fusion protein of human GLS
Host	Rabbit
Isotype	IgG
Purification	Affinity purification
Conjugation	Unconjugated
Formulation	PBS with 0.05% proclin300,50% glycerol,pH7.3.

Applications Recommended Dilution

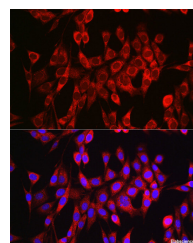
WB	1:500-1:2000
IF	1:50-1:200

Data

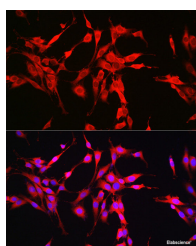


Western blot analysis of extracts of various cell lines using Glutaminase (Glutaminase (GLS)) Polyclonal Antibody at 1:1000 dilution.

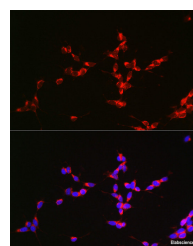
Observed Mw:65-73KDa
Calculated Mw:17kDa/65kDa/73kDa



Immunofluorescence analysis of NIH/3T3 cells using Glutaminase (GLS) Polyclonal Antibody at dilution of 1:150. Blue: DAPI for nuclear staining.



Immunofluorescence analysis of PC-12 cells using Glutaminase (GLS) Polyclonal antibody at dilution of 1:150. Blue: DAPI for nuclear staining.



Immunofluorescence analysis of SH-SY5Y cells using Glutaminase (GLS) Polyclonal antibody at dilution of 1:150. Blue: DAPI for nuclear staining.

Preparation & Storage

Storage Store at -20°C. Avoid freeze / thaw cycles.

Background

This gene encodes the K-type mitochondrial glutaminase. The encoded protein is an phosphate-activated amidohydrolase that catalyzes the hydrolysis of glutamine to glutamate and ammonia. This protein is primarily expressed in the brain and

For Research Use Only

A Reliable Research Partner in Life Science and Medicine

Toll-free: 1-888-852-8623

Web: www.elabscience.com

Tel: 1-832-243-6086

Email: techsupport@elabscience.com

Fax: 1-832-243-6017

GLS Polyclonal Antibody

Catalog Number:E-AB-62763



kidney plays an essential role in generating energy for metabolism, synthesizing the brain neurotransmitter glutamate and maintaining acid-base balance in the kidney. Alternate splicing results in multiple transcript variants.

For Research Use Only

A Reliable Research Partner in Life Science and Medicine

Toll-free: 1-888-852-8623

Web: www.elabscience.com

Tel: 1-832-243-6086

Email: techsupport@elabscience.com

Fax: 1-832-243-6017