

(KO Validated) NUCB1 Polyclonal Antibody

Catalog Number:E-AB-65460



Note: Centrifuge before opening to ensure complete recovery of vial contents.

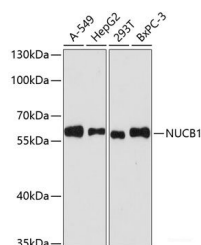
Description

Reactivity	Human,Mouse,Rat
Immunogen	Recombinant fusion protein of human NUCB1 (NP_006175.2).
Host	Rabbit
Isotype	IgG
Purification	Affinity purification
Conjugation	Unconjugated
Formulation	PBS with 0.02% sodium azide, 50% glycerol, pH7.3.

Applications Recommended Dilution

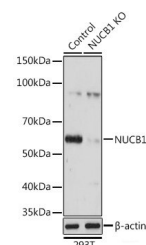
WB	1:500-1:2000
IF	1:50-1:100

Data

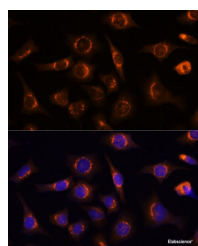


Western blot analysis of extracts of various cell lines using NUCB1 Polyclonal Antibody at dilution of 1:3000.

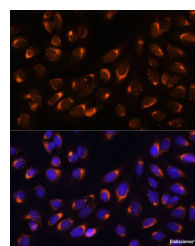
Observed Mw:60kDa
Calculated Mw:53kDa



Western blot analysis of extracts from normal (control) and NUCB1 knockout (KO) 293T cells using NUCB1 Polyclonal Antibody at dilution of 1:3000.



Immunofluorescence analysis of L929 cells using NUCB1 Polyclonal Antibody at dilution of 1:100 (40x lens). Blue: DAPI for nuclear staining.



Immunofluorescence analysis of U-2 OS cells using NUCB1 Polyclonal Antibody at dilution of 1:100 (40x lens). Blue: DAPI for nuclear staining.

Preparation & Storage

Storage Store at -20°C. Avoid freeze / thaw cycles.

Background

This gene encodes a member of a small calcium-binding EF-hand protein family. The encoded protein is thought to have a key role in Golgi calcium homeostasis and Ca(2+)-regulated signal transduction events.

For Research Use Only

A Reliable Research Partner in Life Science and Medicine

Toll-free: 1-888-852-8623

Web: www.elabscience.com

Tel: 1-832-243-6086

Email: techsupport@elabscience.com

Fax: 1-832-243-6017