

PPP1CC Polyclonal Antibody

Catalog No. E-AB-62175

Note: Centrifuge before opening to ensure complete recovery of vial contents.

Description

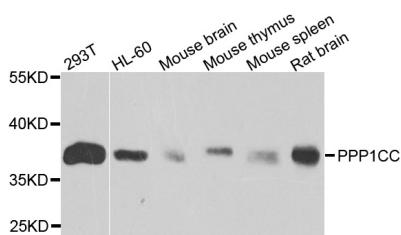
Reactivity	Human, Mouse, Rat
Immunogen	Recombinant protein of human PPP1CC
Host	Rabbit
Isotype	IgG
Purification	Affinity purification
Conjugation	Unconjugated
Buffer	PBS with 0.02% sodium azide and 50% glycerol pH 7.4.

Applications Recommended Dilution

WB 1:200 - 1:2000

IHC 1:50 - 1:200

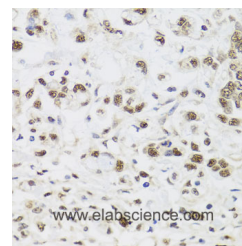
Data



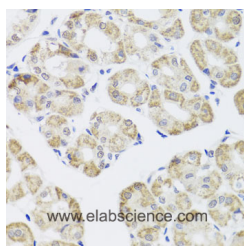
Western blot analysis of extracts of various cell lines with PPP1CC Polyclonal Antibody

Observed Mw:38kDa

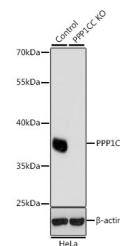
Calculated Mw:36kDa/38kDa



Immunohistochemistry of paraffin-embedded human gastric cancer with PPP1CC Polyclonal Antibody



Immunohistochemistry of paraffin-embedded human stomach with PPP1CC Polyclonal Antibody



Western blot analysis of extracts from normal (control) and PPP1CC knockout (KO) HeLa cells, using PPP1CC Polyclonal Antibody at dilution of 1:1000.

Preparation & Storage

Storage Store at -20°C. Avoid freeze / thaw cycles.

For Research Use Only

Background

The protein encoded by this gene belongs to the protein phosphatase family, PP1 subfamily. PP1 is an ubiquitous serine/threonine phosphatase that regulates many cellular processes, including cell division. It is expressed in mammalian cells as three closely related isoforms, alpha, beta/delta and gamma, which have distinct localization patterns. This gene encodes the gamma isozyme. Alternatively spliced transcript variants encoding different isoforms have been found for this gene.