

# TMOD1 Polyclonal Antibody

Catalog Number:E-AB-62943

**Note:** Centrifuge before opening to ensure complete recovery of vial contents.

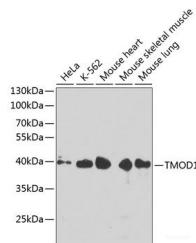
## Description

|                     |  |
|---------------------|--|
| <b>Reactivity</b>   | Human,Mouse,Rat  |
| <b>Immunogen</b>    | Recombinant fusion protein of human TMOD1 (NP_003266.1). |
| <b>Host</b>         | Rabbit   |
| <b>Isotype</b>      | IgG  |
| <b>Purification</b> | Affinity purification                                    |
| <b>Conjugation</b>  | Unconjugated   |
| <b>Formulation</b>  | PBS with 0.02% sodium azide, 50% glycerol, pH7.3.        |

## Applications Recommended Dilution

|           |               |
|-----------|---------------|
| <b>WB</b> | 1:1000-1:4000 |
|-----------|---------------|

## Data



Western blot analysis of extracts of various cell lines using TMOD1 Polyclonal Antibody at dilution of 1:1000.

**Observed Mw:40kDa**  
**Calculated Mw:26kDa/40kDa**

## Preparation & Storage

**Storage** Store at -20°C. Avoid freeze / thaw cycles.

## Background

This gene encodes a member of the tropomodulin family. The encoded protein is an actin-capping protein that regulates tropomyosin by binding to its N-terminus, inhibiting depolymerization and elongation of the pointed end of actin filaments and thereby influencing the structure of the erythrocyte membrane skeleton. Multiple transcript variants encoding the same protein have been found for this gene.

## For Research Use Only

A Reliable Research Partner in Life Science and Medicine

Toll-free: 1-888-852-8623

Web: [www.elabscience.com](http://www.elabscience.com)

Tel: 1-832-243-6086

Email: [techsupport@elabscience.com](mailto:techsupport@elabscience.com)

Fax: 1-832-243-6017