

# IFITM1 Polyclonal Antibody

Catalog Number:E-AB-65471

**Note:** Centrifuge before opening to ensure complete recovery of vial contents.

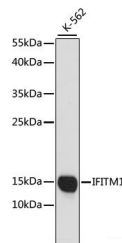
## Description

<b>Reactivity</b>	Human,Mouse
<b>Immunogen</b>	A synthetic peptide of human IFITM1 (NP_003632.3).
<b>Host</b>	Rabbit
<b>Isotype</b>	IgG
<b>Purification</b>	Affinity purification
<b>Conjugation</b>	Unconjugated
<b>Formulation</b>	PBS with 0.02% sodium azide, 50% glycerol, pH7.3.

## Applications Recommended Dilution

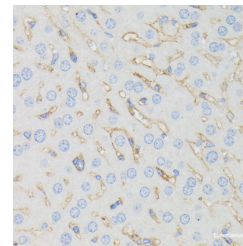
<b>WB</b>	1:200-1:2000
<b>IHC</b>	1:50-1:200

## Data

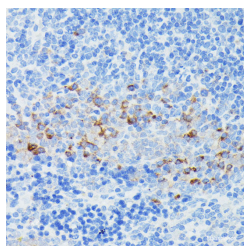


Western blot analysis of extracts of K-562 cells using IFITM1 Polyclonal Antibody at dilution of 1:1000.

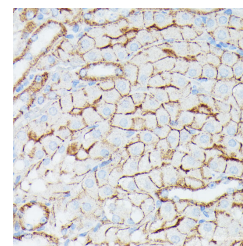
**Observed Mw:17kDa**  
**Calculated Mw:13kDa**



Immunohistochemistry of paraffin-embedded Mouse liver using IFITM1 Polyclonal Antibody at dilution of 1:100 (40x lens).



Immunohistochemistry of paraffin-embedded Mouse spleen using IFITM1 Polyclonal Antibody at dilution of 1:100 (40x lens).



Immunohistochemistry of paraffin-embedded Mouse kidney using IFITM1 Polyclonal Antibody at dilution of 1:100 (40x lens).

## Preparation & Storage

**Storage** Store at -20°C. Avoid freeze / thaw cycles.

## Background

Interferons (IFNs) are potential antitumor agents, as they exhibit antiproliferative and differentiating properties, in addition to functioning in the defense against microbial infections. IFN exposure induces the regulation of expression levels of cellular proteins that mediate the pleiotropic effects of interferons. These effects may be mediated by soluble

## For Research Use Only

A Reliable Research Partner in Life Science and Medicine

Toll-free: 1-888-852-8623

Web: [www.elabscience.com](http://www.elabscience.com)

Tel: 1-832-243-6086

Email: [techsupport@elabscience.com](mailto:techsupport@elabscience.com)

Fax: 1-832-243-6017

# IFITM1 Polyclonal Antibody

Catalog Number: E-AB-65471



factors or by cell-cell interactions involving specific membrane proteins. The IFITM family of proteins are transmembrane proteins so named because their expression is IFN-inducible. IFITM proteins have been found upregulated in human colorectal carcinomas. Both mouse IFITM1 (also known as CD225) and IFITM3 demonstrate expression on the cell surfaces of primordial germ cells in a developmentally-regulated manner. They presumably modulate cell adhesion and influence cell differentiation. IFITM1 activity is required for primordial germ cell transit, and IFITM1 acts as a repulsive molecule by repelling non-IFITM1-expressing primordial germ cells from the mesoderm into the endoderm.

---

## For Research Use Only

A Reliable Research Partner in Life Science and Medicine

Toll-free: 1-888-852-8623

Tel: 1-832-243-6086

Fax: 1-832-243-6017

Web: [www.elabscience.com](http://www.elabscience.com)

Email: [techsupport@elabscience.com](mailto:techsupport@elabscience.com)