

RPH3AL Polyclonal Antibody

Catalog No. E-AB-63005

Note: Centrifuge before opening to ensure complete recovery of vial contents.

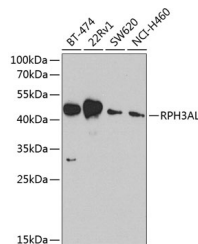
Description

Reactivity	Human, Mouse
Immunogen	Recombinant fusion protein of human RPH3AL
Host	Rabbit
Isotype	IgG
Purification	Affinity purification
Conjugation	Unconjugated
Buffer	PBS with 0.02% sodium azide, 50% glycerol, pH7.3.

Applications Recommended Dilution

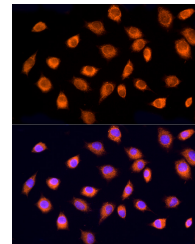
WB	1:500-1:2000
IF	1:50-1:200

Data

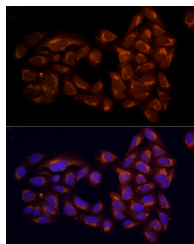


Western blot analysis of extracts of various cell lines using RPH3AL Polyclonal Antibody at 1:1000 dilution.

Observed Mw:45kDa
Calculated Mw:31kDa/34kDa



Immunofluorescence analysis of L929 cells using RPH3AL Polyclonal Antibody at dilution of 100 (40x lens). Blue: DAPI for nuclear staining.



Immunofluorescence analysis of U2OS cells using RPH3AL Polyclonal antibody at dilution of 100 (40x lens). Blue: DAPI for nuclear staining.

Preparation & Storage

For Research Use Only

Storage Store at -20°C. Avoid freeze / thaw cycles.

Background

The protein encoded by this gene plays a direct regulatory role in calcium-ion-dependent exocytosis in both endocrine and exocrine cells and plays a key role in insulin secretion by pancreatic cells. This gene is likely a tumor suppressor. Alternative splicing results in multiple transcript variants encoding distinct isoforms.