

# RPH3AL Polyclonal Antibody

Catalog Number:E-AB-63005

**Note:** Centrifuge before opening to ensure complete recovery of vial contents.

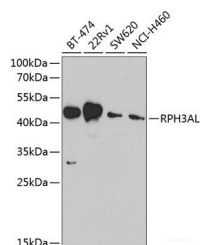
## Description

<b>Reactivity</b>	Human,Mouse
<b>Immunogen</b>	Recombinant fusion protein of human RPH3AL
<b>Host</b>	Rabbit
<b>Isotype</b>	IgG
<b>Purification</b>	Affinity purification
<b>Conjugation</b>	Unconjugated
<b>Formulation</b>	PBS with 0.02% sodium azide,50% glycerol,pH7.3.

## Applications Recommended Dilution

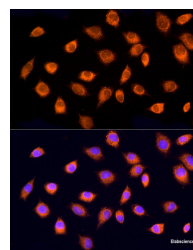
<b>WB</b>	1:500-1:2000
<b>IF</b>	1:50-1:200

## Data

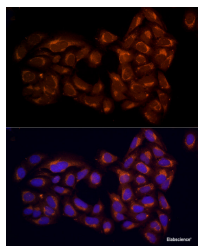


Western blot analysis of extracts of various cell lines using RPH3AL Polyclonal Antibody at 1:1000 dilution.

**Observed Mw:45kDa**  
**Calculated Mw:31kDa/34kDa**



Immunofluorescence analysis of L929 cells using RPH3AL Polyclonal Antibody at dilution of 100 (40x lens). Blue: DAPI for nuclear staining.



Immunofluorescence analysis of U2OS cells using RPH3AL Polyclonal antibody at dilution of 100 (40x lens). Blue: DAPI for nuclear staining.

## Preparation & Storage

**Storage** Store at -20°C. Avoid freeze / thaw cycles.

## Background

The protein encoded by this gene plays a direct regulatory role in calcium-ion-dependent exocytosis in both endocrine and exocrine cells and plays a key role in insulin secretion by pancreatic cells. This gene is likely a tumor suppressor.

## For Research Use Only

A Reliable Research Partner in Life Science and Medicine

Toll-free: 1-888-852-8623

Web: [www.elabscience.com](http://www.elabscience.com)

Tel: 1-832-243-6086

Email: [techsupport@elabscience.com](mailto:techsupport@elabscience.com)

Fax: 1-832-243-6017

# RPH3AL Polyclonal Antibody

Catalog Number:E-AB-63005



Alternative splicing results in multiple transcript variants encoding distinct isoforms.

---

## For Research Use Only

A Reliable Research Partner in Life Science and Medicine

Toll-free: 1-888-852-8623

Web: [www.elabscience.com](http://www.elabscience.com)

Tel: 1-832-243-6086

Email: [techsupport@elabscience.com](mailto:techsupport@elabscience.com)

Fax: 1-832-243-6017