

## BCAS2 Polyclonal Antibody

**Catalog No.** E-AB-62340

*Note:* Centrifuge before opening to ensure complete recovery of vial contents.

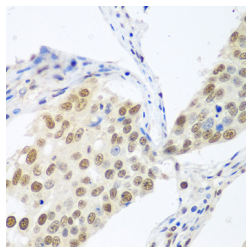
### Description

<b>Reactivity</b>	Human,Mouse,Rat
<b>Immunogen</b>	Recombinant fusion protein of human BCAS2 (NP_005863.1).
<b>Host</b>	Rabbit
<b>Isotype</b>	IgG
<b>Purification</b>	Affinity purification
<b>Conjugation</b>	Unconjugated
<b>Buffer</b>	PBS with 0.02% sodium azide, 50% glycerol, pH7.3.

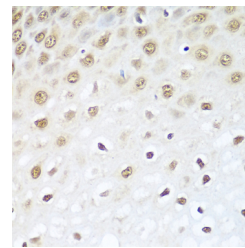
### Applications Recommended Dilution

**IHC 1:50-1:200 IF  
1:50-1:200**

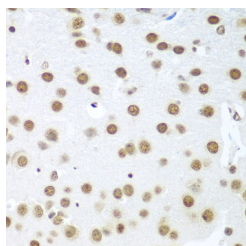
### Data



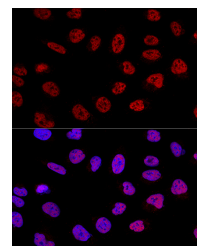
Immunohistochemistry of paraffin-embedded Human lung cancer using BCAS2 Polyclonal Antibody at dilution of 1:100 (40x lens).



Immunohistochemistry of paraffin-embedded Human esophagus using BCAS2 Polyclonal Antibody at dilution of 1:100 (40x lens).



Immunohistochemistry of paraffin-embedded Mouse brain using BCAS2 Polyclonal Antibody at dilution of 1:100 (40x lens).



Confocal immunofluorescence analysis of U2OS cells using BCAS2 Polyclonal Antibody at dilution of 1:100. Blue: DAPI for nuclear staining.

### Preparation & Storage

**Storage** Store at -20°C. Avoid freeze / thaw cycles.

### Background

### For Research Use Only

BCAS2 (BCAS2 Pre-mRNA Processing Factor) is a Protein Coding gene. Diseases associated with BCAS2 include Breast Cancer. Among its related pathways are Gene Expression and mRNA Splicing - Major Pathway.