

## HMG20B Polyclonal Antibody

**Catalog No.** E-AB-62341

**Note:** Centrifuge before opening to ensure complete recovery of vial contents.

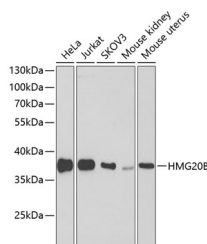
### Description

<b>Reactivity</b>	Human, Mouse, Rat
<b>Immunogen</b>	Recombinant fusion protein of human HMG20B (NP_006330.2).
<b>Host</b>	Rabbit
<b>Isotype</b>	IgG
<b>Purification</b>	Affinity purification
<b>Conjugation</b>	Unconjugated
<b>Buffer</b>	PBS with 0.02% sodium azide, 50% glycerol, pH7.3.

### Applications Recommended Dilution

**WB** 1:200-1:2000

### Data



Western blot analysis of extracts of various cell lines using HMG20B Polyclonal Antibody at dilution of 1:1000.

**Observed Mw:36kDa**

**Calculated Mw:24kDa/32kDa/35kDa**

### Preparation & Storage

**Storage** Store at -20°C. Avoid freeze / thaw cycles.

### Background

HMG20B (High Mobility Group 20B) is a Protein Coding gene. Among its related pathways are Response to elevated platelet cytosolic Ca<sup>2+</sup> and Activated PKN1 stimulates transcription of AR (androgen receptor) regulated genes KLK2 and KLK3. Gene Ontology (GO) annotations related to this gene include protein heterodimerization activity and chromatin binding. An important paralog of this gene is HMG20A.

### For Research Use Only