

TUBGCP3 Polyclonal Antibody

Catalog No. E-AB-62346

Note: Centrifuge before opening to ensure complete recovery of vial contents.

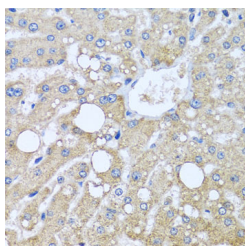
Description

Reactivity	Human,Mouse,Rat
Immunogen	Recombinant fusion protein of human TUBGCP3 (NP_001273207.1).
Host	Rabbit
Isotype	IgG
Purification	Affinity purification
Conjugation	Unconjugated
Buffer	PBS with 0.02% sodium azide, 50% glycerol, pH7.3.

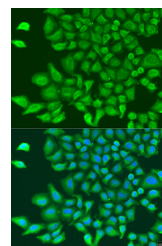
Applications Recommended Dilution

**IHC 1:50-1:100 IF
1:50-1:100**

Data



Immunohistochemistry of paraffin-embedded Human liver damage using TUBGCP3 Polyclonal Antibody at dilution of 1:100 (40x lens).



Immunofluorescence analysis of U2OS cells using TUBGCP3 Polyclonal Antibody at dilution of 1:100. Blue: DAPI for nuclear staining.

Preparation & Storage

Storage Store at -20°C. Avoid freeze / thaw cycles.

Background

TUBGCP3 (Tubulin Gamma Complex Associated Protein 3) is a Protein Coding gene. Diseases associated with TUBGCP3 include Cardiomyopathy, Dilated, 1P. Among its related pathways are G-Beta Gamma Signaling and Regulation of PLK1 Activity at G2/M Transition. Gene Ontology (GO) annotations related to this gene include structural molecule activity and gamma-tubulin binding. An important paralog of this gene is TUBGCP6.

For Research Use Only