

## TOMM34 Polyclonal Antibody

Catalog No. E-AB-62367

**Note:** Centrifuge before opening to ensure complete recovery of vial contents.

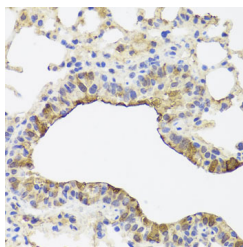
### Description

|                     |   |
|---------------------|---|
| <b>Reactivity</b>   | Human,Mouse   |
| <b>Immunogen</b>    | Recombinant fusion protein of human TOMM34 (NP_006800.2). |
| <b>Host</b>         | Rabbit  |
| <b>Isotype</b>      | IgG   |
| <b>Purification</b> | Affinity purification                                     |
| <b>Conjugation</b>  | Unconjugated  |
| <b>Buffer</b>       | PBS with 0.02% sodium azide, 50% glycerol, pH7.3.         |

### Applications Recommended Dilution

IHC 1:50-1:200

### Data



Immunohistochemistry of paraffin-embedded Mouse lung using TOMM34 Polyclonal Antibody at dilution of 1:100 (40x lens).

### Preparation & Storage

**Storage** Store at -20°C. Avoid freeze / thaw cycles.

### Background

The protein encoded by this gene is involved in the import of precursor proteins into mitochondria. The encoded protein has a chaperone-like activity, binding the mature portion of unfolded proteins and aiding their import into mitochondria. This protein, which is found in the cytoplasm and sometimes associated with the outer mitochondrial membrane, has a weak ATPase activity and contains 6 TPR repeats.

### For Research Use Only