

CSTF2T Polyclonal Antibody

Catalog Number: E-AB-63795

Note: Centrifuge before opening to ensure complete recovery of vial contents.

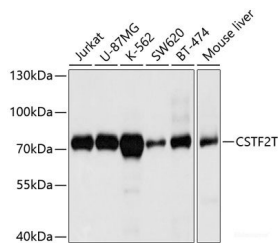
Description

Reactivity	Human, Mouse
Immunogen	Recombinant fusion protein of human CSTF2T (NP_056050.1).
Host	Rabbit
Isotype	IgG
Purification	Affinity purification
Conjugation	Unconjugated
Formulation	PBS with 0.02% sodium azide, 50% glycerol, pH7.3.

Applications Recommended Dilution

WB	1:1000-1:2000
-----------	---------------

Data



Western blot analysis of extracts of various cell lines using CSTF2T Polyclonal Antibody at dilution of 1:1000.

Observed Mw:70kDa
Calculated Mw:64kDa

Preparation & Storage

Storage Store at -20°C. Avoid freeze / thaw cycles.

Background

CSTF2T (Cleavage Stimulation Factor Subunit 2 Tau Variant) is a Protein Coding gene. Diseases associated with CSTF2T include Oligoasthenoteratozoospermia. Among its related pathways are Cleavage of Growing Transcript in the Termination Region and Gene Expression. Gene Ontology (GO) annotations related to this gene include nucleic acid binding and RNA binding. An important paralog of this gene is CSTF2.

For Research Use Only

A Reliable Research Partner in Life Science and Medicine

Toll-free: 1-888-852-8623

Web: www.elabscience.com

Tel: 1-832-243-6086

Email: techsupport@elabscience.com

Fax: 1-832-243-6017