

# RHOF Polyclonal Antibody

Catalog Number:E-AB-65496



**Note:** Centrifuge before opening to ensure complete recovery of vial contents.

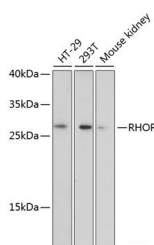
## Description

<b>Reactivity</b>	Human,Mouse
<b>Immunogen</b>	Recombinant fusion protein of human RHOF (NP_061907.2).
<b>Host</b>	Rabbit
<b>Isotype</b>	IgG
<b>Purification</b>	Affinity purification
<b>Conjugation</b>	Unconjugated
<b>Formulation</b>	PBS with 0.02% sodium azide, 50% glycerol, pH7.3.

## Applications Recommended Dilution

<b>WB</b>	1:500-1:2000
-----------	--------------

## Data



Western blot analysis of extracts of various cell lines  
using RHOF Polyclonal Antibody at dilution of  
1:3000.

**Observed Mw:27kDa**

**Calculated Mw:18kDa/23kDa**

## Preparation & Storage

<b>Storage</b>	Store at -20°C. Avoid freeze / thaw cycles.
----------------	---

## Background

RHOF (Ras Homolog Family Member F, Filopodia Associated) is a Protein Coding gene. Diseases associated with RHOF include Deafness, Autosomal Recessive 104 and Ascaridiasis. Among its related pathways are Signaling by GPCR and Innate Immune System. Gene Ontology (GO) annotations related to this gene include GTP binding and GTPase activity. An important paralog of this gene is RHOD.

## For Research Use Only

A Reliable Research Partner in Life Science and Medicine

Toll-free: 1-888-852-8623

Web: [www.elabscience.com](http://www.elabscience.com)

Tel: 1-832-243-6086

Email: [techsupport@elabscience.com](mailto:techsupport@elabscience.com)

Fax: 1-832-243-6017