

# HAUS6 Polyclonal Antibody

Catalog Number:E-AB-62461



**Note:** Centrifuge before opening to ensure complete recovery of vial contents.

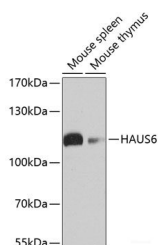
## Description

<b>Reactivity</b>	Human,Mouse
<b>Immunogen</b>	Recombinant fusion protein of human HAUS6
<b>Host</b>	Rabbit
<b>Isotype</b>	IgG
<b>Purification</b>	Affinity purification
<b>Conjugation</b>	Unconjugated
<b>Formulation</b>	PBS with 0.02% sodium azide,50% glycerol,pH7.3.

## Applications Recommended Dilution

<b>WB</b>	1:500-1:2000
-----------	--------------

## Data



Western blot analysis of extracts of various cell lines using HAUS6 Polyclonal Antibody at 1:1000 dilution.

**Observed Mw:109kDa**

**Calculated Mw:69kDa/104kDa/108kDa**

## Preparation & Storage

**Storage** Store at -20°C. Avoid freeze / thaw cycles.

## Background

The protein encoded by this gene is a subunit of the augmin complex. The augmin complex plays a role in microtubule attachment to the kinetochore and central spindle formation. This protein may have a role in efficient chromosome congression and segregation by promoting microtubule-dependent microtubule amplification. Pseudogenes of this gene are located on chromosomes 7 and 20. Alternative splicing results in multiple transcript variants that encode different protein isoforms.

## For Research Use Only

A Reliable Research Partner in Life Science and Medicine

Toll-free: 1-888-852-8623

Web: [www.elabscience.com](http://www.elabscience.com)

Tel: 1-832-243-6086

Email: [techsupport@elabscience.com](mailto:techsupport@elabscience.com)

Fax: 1-832-243-6017