

NHEJ1 Polyclonal Antibody

Catalog No. E-AB-63809

Note: Centrifuge before opening to ensure complete recovery of vial contents.

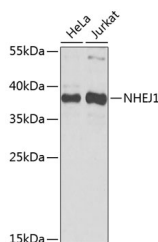
Description

Reactivity	Human, Mouse, Rat
Immunogen	Recombinant fusion protein of human NHEJ1 (NP_079058.1).
Host	Rabbit
Isotype	IgG
Purification	Affinity purification
Conjugation	Unconjugated
Buffer	PBS with 0.02% sodium azide, 50% glycerol, pH7.3.

Applications Recommended Dilution

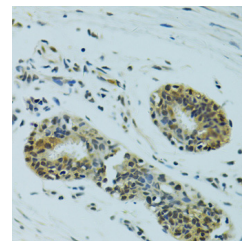
WB 1:200-1:2000 IHC
1:50-1:200 IF
1:50-1:200

Data

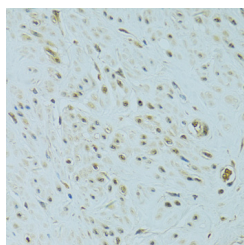


Western blot analysis of extracts of various cell lines using NHEJ1 Polyclonal Antibody at dilution of 1:1000.

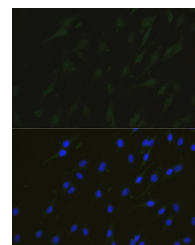
Observed Mw:38kDa
Calculated Mw:33kDa/35kDa



Immunohistochemistry of paraffin-embedded Human breast cancer using NHEJ1 Polyclonal Antibody at dilution of 1:100 (40x lens).

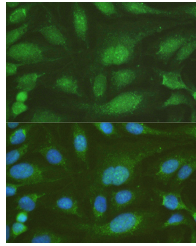


Immunohistochemistry of paraffin-embedded Human uterine cancer using NHEJ1 Polyclonal Antibody at dilution of 1:100 (40x lens).



Immunofluorescence analysis of C6 cells using NHEJ1 Polyclonal Antibody at dilution of 1:100. Blue: DAPI for nuclear staining.

For Research Use Only



Immunofluorescence analysis of U-2OS cells using
NHEJ1 Polyclonal Antibody at dilution of 1:100.
Blue: DAPI for nuclear staining.

Preparation & Storage

Storage Store at -20°C. Avoid freeze / thaw cycles.

Background

Double-strand breaks in DNA result from genotoxic stresses and are among the most damaging of DNA lesions. This gene encodes a DNA repair factor essential for the nonhomologous end-joining pathway, which preferentially mediates repair of double-stranded breaks. Mutations in this gene cause different kinds of severe combined immunodeficiency disorders.

For Research Use Only