

# NEDD1 Polyclonal Antibody

Catalog Number:E-AB-62567



**Note:** Centrifuge before opening to ensure complete recovery of vial contents.

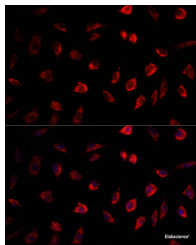
## Description

|                     |  |
|---------------------|--|
| <b>Reactivity</b>   | Human,Mouse,Rat  |
| <b>Immunogen</b>    | Recombinant fusion protein of human NEDD1 (NP_690869.1). |
| <b>Host</b>         | Rabbit   |
| <b>Isotype</b>      | IgG  |
| <b>Purification</b> | Affinity purification                                    |
| <b>Conjugation</b>  | Unconjugated   |
| <b>Formulation</b>  | PBS with 0.02% sodium azide, 50% glycerol, pH7.3.        |

## Applications Recommended Dilution

|           |            |
|-----------|------------|
| <b>IF</b> | 1:50-1:200 |
|-----------|------------|

## Data



Immunofluorescence analysis of L929 cells using NEDD1 Polyclonal Antibody at dilution of 1:100.  
Blue: DAPI for nuclear staining.

## Preparation & Storage

**Storage** Store at -20°C. Avoid freeze / thaw cycles.

## Background

NEDD1 (NEDD1 Gamma-Tubulin Ring Complex Targeting Factor) is a Protein Coding gene. Diseases associated with NEDD1 include Seckel Syndrome 7 and Orofaciodigital Syndrome Ix. Among its related pathways are Organelle biogenesis and maintenance and Regulation of PLK1 Activity at G2/M Transition. An important paralog of this gene is WDR62.

## For Research Use Only

A Reliable Research Partner in Life Science and Medicine

Toll-free: 1-888-852-8623

Web: [www.elabscience.com](http://www.elabscience.com)

Tel: 1-832-243-6086

Email: [techsupport@elabscience.com](mailto:techsupport@elabscience.com)

Fax: 1-832-243-6017