

GTF2H2C Polyclonal Antibody

Catalog Number:E-AB-65514

Note: Centrifuge before opening to ensure complete recovery of vial contents.

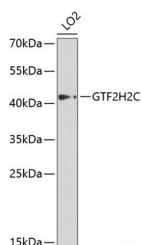
Description

Reactivity	Human,Rat
Immunogen	Recombinant fusion protein of human GTF2H2C (NP_001092198.1).
Host	Rabbit
Isotype	IgG
Purification	Affinity purification
Conjugation	Unconjugated
Formulation	PBS with 0.02% sodium azide, 50% glycerol, pH7.3.

Applications Recommended Dilution

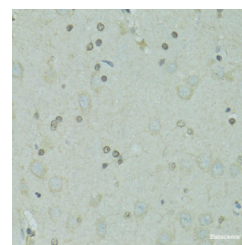
WB	1:200-1:2000
IHC	1:50-1:200

Data

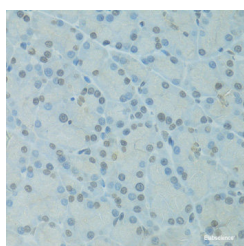


Western blot analysis of extracts of LO2 cells using GTF2H2C Polyclonal Antibody at dilution of 1:1000.

Observed Mw:44kDa
Calculated Mw:44kDa



Immunohistochemistry of paraffin-embedded Rat brain using GTF2H2C Polyclonal Antibody at dilution of 1:100 (40x lens).



Immunohistochemistry of paraffin-embedded Rat pancreas using GTF2H2C Polyclonal Antibody at dilution of 1:100 (40x lens).

Preparation & Storage

Storage Store at -20°C. Avoid freeze / thaw cycles.

Background

GTF2H2C (GTF2H2 Family Member C) is a Protein Coding gene. Diseases associated with GTF2H2C include Spinal Muscular Atrophy, Type Iv and Spinal Muscular Atrophy, Type Iii. Among its related pathways are RNA Polymerase II Transcription Initiation And Promoter Clearance and Nucleotide excision repair. An important paralog of this gene is

For Research Use Only

A Reliable Research Partner in Life Science and Medicine

Toll-free: 1-888-852-8623

Web: www.elabscience.com

Tel: 1-832-243-6086

Email: techsupport@elabscience.com

Fax: 1-832-243-6017

GTF2H2C Polyclonal Antibody

Catalog Number:E-AB-65514



GTF2H2.

For Research Use Only

A Reliable Research Partner in Life Science and Medicine

Toll-free: 1-888-852-8623

Tel: 1-832-243-6086

Fax: 1-832-243-6017

Web: www.elabscience.com

Email: techsupport@elabscience.com