

EIF4A1 Polyclonal Antibody

Catalog No. E-AB-60877

Note: Centrifuge before opening to ensure complete recovery of vial contents.

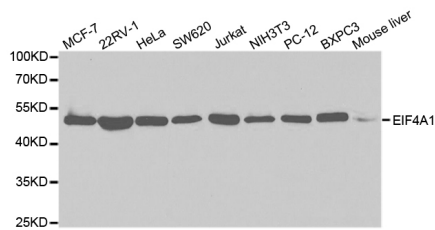
Description

Reactivity	Human, Mouse, Rat
Immunogen	Recombinant protein of human EIF4A1
Host	Rabbit
Isotype	IgG
Purification	Affinity purification
Conjugation	Unconjugated
Buffer	PBS with 0.02% sodium azide and 50% glycerol pH 7.4.

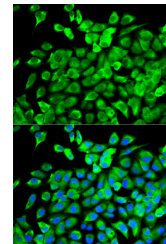
Applications Recommended Dilution

WB	1:500-1:2000
IF	1:20-1:50

Data



Western blot analysis of extracts of various cell lines with EIF4A1 Polyclonal Antibody
Observed Mw:48kDa
Calculated Mw:39kDa/46kDa



Immunofluorescence analysis of MCF-7 cells with EIF4A1 Polyclonal Antibody

Preparation & Storage

Storage Store at -20°C. Avoid freeze / thaw cycles.

For Research Use Only