

SMARCE1 Polyclonal Antibody

Catalog No. E-AB-60925

Note: Centrifuge before opening to ensure complete recovery of vial contents.

Description

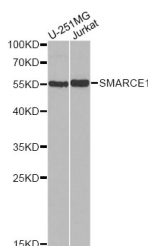
Reactivity	Human, Mouse
Immunogen	Recombinant protein of human SMARCE1
Host	Rabbit
Isotype	IgG
Purification	Affinity purification
Conjugation	Unconjugated
Buffer	PBS with 0.02% sodium azide and 50% glycerol pH 7.4.

Applications

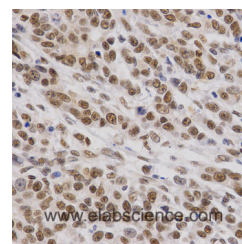
Recommended Dilution

WB 1:500 - 1:2000
IHC 1:50 - 1:200 IF
1:50 - 1:200

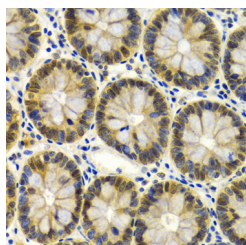
Data



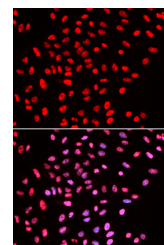
Western blot analysis of extracts of various cell lines with SMARCE1 Polyclonal Antibody
Observed Mw:55kDa
Calculated
Mw:34kDa/37kDa/39kDa/41kDa/42kDa/46kDa



Immunohistochemistry of paraffin-embedded human gastric cancer with SMARCE1 Polyclonal Antibody



Immunohistochemistry of paraffin-embedded human colon with SMARCE1 Polyclonal Antibody



Immunofluorescence analysis of U2OS cells with SMARCE1 Polyclonal Antibody

Preparation & Storage

Storage Store at -20°C. Avoid freeze / thaw cycles.

For Research Use Only

Background

The protein encoded by this gene is part of the large ATP-dependent chromatin remodeling complex SWI/SNF, which is required for transcriptional activation of genes normally repressed by chromatin. The encoded protein, either alone or when in the SWI/SNF complex, can bind to 4-way junction DNA, which is thought to mimic the topology of DNA as it enters or exits the nucleosome. The protein contains a DNA-binding HMG domain, but disruption of this domain does not abolish the DNA-binding or nucleosome-displacement activities of the SWI/SNF complex. Unlike most of the SWI/SNF complex proteins, this protein has no yeast counterpart.

For Research Use Only