

## CUL5 Polyclonal Antibody

**Catalog No.** E-AB-60932

**Note:** Centrifuge before opening to ensure complete recovery of vial contents.

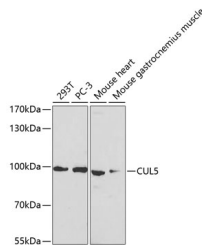
### Description

<b>Reactivity</b>	Human, Mouse
<b>Immunogen</b>	Recombinant fusion protein of human CUL5 (NP_003469.2).
<b>Host</b>	Rabbit
<b>Isotype</b>	IgG
<b>Purification</b>	Affinity purification
<b>Conjugation</b>	Unconjugated
<b>Buffer</b>	PBS with 0.02% sodium azide, 50% glycerol, pH7.3.

### Applications Recommended Dilution

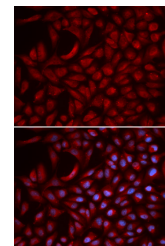
**WB 1:500-1:2000 IF**  
**1:50-1:200**

### Data



Western blot analysis of extracts of various cell lines using CUL5 Polyclonal Antibody at dilution of 1:1000.

**Observed Mw:91kDa**  
**Calculated Mw:90kDa**



Immunofluorescence analysis of U2OS cells using CUL5 Polyclonal Antibody

### Preparation & Storage

**Storage** Store at -20°C. Avoid freeze / thaw cycles.

### Background

CUL5 (Cullin 5) is a Protein Coding gene. Among its related pathways are Innate Immune System and CDK-mediated phosphorylation and removal of Cdc6. Gene Ontology (GO) annotations related to this gene include protein heterodimerization activity and ubiquitin protein ligase binding. An important paralog of this gene is CUL1.

### For Research Use Only