

## Nectin 2/CD112 Polyclonal Antibody

**Catalog No.** E-AB-60936

*Note:* Centrifuge before opening to ensure complete recovery of vial contents.

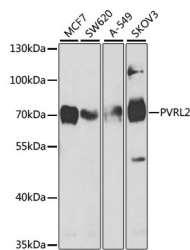
### Description

<b>Reactivity</b>	Human
<b>Immunogen</b>	Recombinant fusion protein of human Nectin 2/CD112 (NP_002847.1).
<b>Host</b>	Rabbit
<b>Isotype</b>	IgG
<b>Purification</b>	Affinity purification
<b>Conjugation</b>	Unconjugated
<b>Buffer</b>	PBS with 0.02% sodium azide, 50% glycerol, pH7.3.

### Applications Recommended Dilution

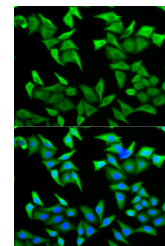
**WB 1:500-1:2000 IF**  
**1:50-1:200**

### Data



Western blot analysis of extracts of various cell lines using Nectin 2/CD112 Polyclonal Antibody at dilution of 1:1000.

**Observed Mw:72kDa**  
**Calculated Mw:51kDa/57kDa**



Immunofluorescence analysis of HeLa cells using Nectin 2/CD112 Polyclonal Antibody

### Preparation & Storage

**Storage** Store at -20°C. Avoid freeze / thaw cycles.

### Background

This gene encodes a single-pass type I membrane glycoprotein with two Ig-like C2-type domains and an Ig-like V-type domain. This protein is one of the plasma membrane components of adherens junctions. It also serves as an entry for certain mutant strains of herpes simplex virus and pseudorabies virus, and it is involved in cell to cell spreading of these viruses. Variations in this gene have been associated with differences in the severity of multiple sclerosis. Alternate transcriptional splice variants, encoding different isoforms, have been characterized.

### For Research Use Only