

## SFRP2 Polyclonal Antibody

Catalog No. E-AB-61796

*Note:* Centrifuge before opening to ensure complete recovery of vial contents.

### Description

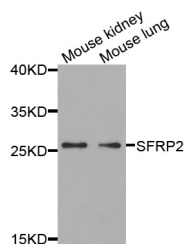
<b>Reactivity</b>	Human, Mouse, Rat
<b>Immunogen</b>	Recombinant protein of human SFRP2
<b>Host</b>	Rabbit
<b>Isotype</b>	IgG
<b>Purification</b>	Affinity purification
<b>Conjugation</b>	Unconjugated
<b>Buffer</b>	PBS with 0.02% sodium azide and 50% glycerol pH 7.4.

### Applications

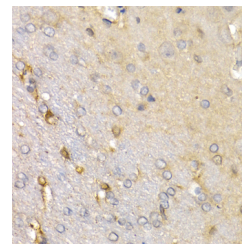
### Recommended Dilution

**WB 1:500 - 1:2000**  
**IHC 1:50 - 1:200 IF**  
**1:50 - 1:100**

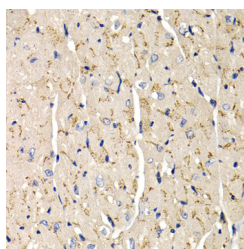
### Data



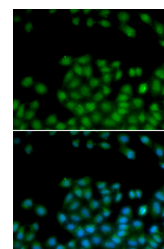
Western blot analysis of extracts of various cell lines with SFRP2 Polyclonal Antibody  
**Observed Mw:26kDa**  
**Calculated Mw:33kDa**



Immunohistochemistry of paraffin-embedded rat brain with SFRP2 Polyclonal Antibody



Immunohistochemistry of paraffin-embedded mouse heart with SFRP2 Polyclonal Antibody



Immunofluorescence analysis of HeLa cells with SFRP2 Polyclonal Antibody

### Preparation & Storage

**Storage** Store at -20°C. Avoid freeze / thaw cycles.

### For Research Use Only

## Background

This gene encodes a member of the SFRP family that contains a cysteine-rich domain homologous to the putative Wnt-binding site of Frizzled proteins. SFRPs act as soluble modulators of Wnt signaling. Methylation of this gene is a potential marker for the presence of colorectal cancer.