

GLUL Polyclonal Antibody

Catalog No. E-AB-60964

Note: Centrifuge before opening to ensure complete recovery of vial contents.

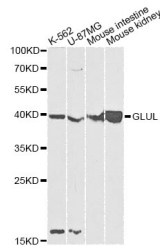
Description

Reactivity	Human, Mouse
Immunogen	Recombinant protein of human GLUL
Host	Rabbit
Isotype	IgG
Purification	Affinity purification
Conjugation	Unconjugated
Buffer	PBS with 0.02% sodium azide and 50% glycerol pH 7.4.

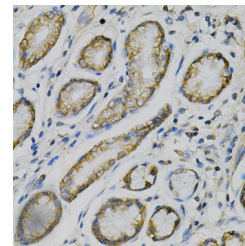
Applications Recommended Dilution

WB	1:500-1:2000
IHC	1:50-1:200
IF	1:50-1:200

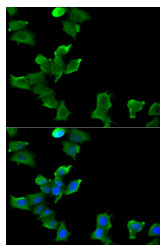
Data



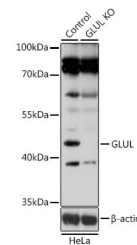
Western blot analysis of extracts of various cell lines with GLUL Polyclonal Antibody
Observed Mw:40kDa
Calculated Mw:42kDa



Immunohistochemistry of paraffin-embedded human stomach with GLUL Polyclonal Antibody



Immunofluorescence analysis of MCF-7 cells with GLUL Polyclonal Antibody



Western blot analysis of extracts from normal (control) and GLUL knockout (KO) HeLa cells, using GLUL Polyclonal Antibody at dilution of 1:1000.

For Research Use Only

Preparation & Storage

Storage Store at -20°C. Avoid freeze / thaw cycles.

Background

The protein encoded by this gene belongs to the glutamine synthetase family. It catalyzes the synthesis of glutamine from glutamate and ammonia in an ATP-dependent reaction. This protein plays a role in ammonia and glutamate detoxification, acid-base homeostasis, cell signaling, and cell proliferation. Glutamine is an abundant amino acid, and is important to the biosynthesis of several amino acids, pyrimidines, and purines. Mutations in this gene are associated with congenital glutamine deficiency, and overexpression of this gene was observed in some primary liver cancer samples. There are six pseudogenes of this gene found on chromosomes 2, 5, 9, 11, and 12. Alternative splicing results in multiple transcript variants.

For Research Use Only