

## MAGEA1 Polyclonal Antibody

Catalog No. E-AB-61801

**Note:** Centrifuge before opening to ensure complete recovery of vial contents.

### Description

<b>Reactivity</b>	Human
<b>Immunogen</b>	Recombinant fusion protein of human MAGEA1 (NP_004979.3).
<b>Host</b>	Rabbit
<b>Isotype</b>	IgG
<b>Purification</b>	Affinity purification
<b>Conjugation</b>	Unconjugated
<b>Buffer</b>	PBS with 0.02% sodium azide, 50% glycerol, pH7.3.

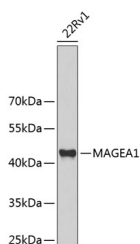
### Applications Recommended Dilution

WB 1:500-1:2000 IHC

1:50-1:200 IF

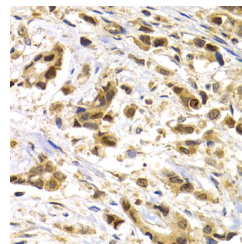
1:50-1:100

### Data

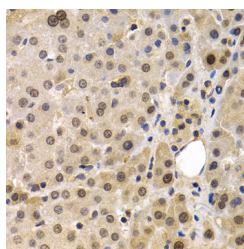


Western blot analysis of extracts of 22Rv1 cells using MAGEA1 Polyclonal Antibody at dilution of 1:1000.

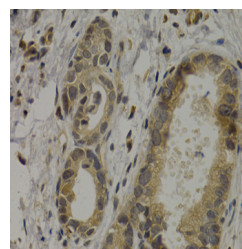
**Observed Mw:45kDa**  
**Calculated Mw:34kDa**



Immunohistochemistry of paraffin-embedded Human breast cancer using MAGEA1 Polyclonal Antibody at dilution of 1:200 (40x lens).

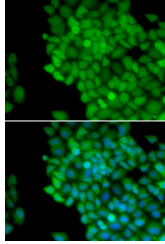


Immunohistochemistry of paraffin-embedded Human liver cancer using MAGEA1 Polyclonal Antibody at dilution of 1:200 (40x lens).



Immunohistochemistry of paraffin-embedded Human stomach cancer using MAGEA1 Polyclonal Antibody at dilution of 1:200 (40x lens).

### For Research Use Only



Immunofluorescence analysis of HeLa cells using  
MAGEA1 Polyclonal Antibody

## Preparation & Storage

**Storage** Store at -20°C. Avoid freeze / thaw cycles.

## Background

This gene is a member of the MAGEA gene family. The members of this family encode proteins with 50 to 80% sequence identity to each other. The promoters and first exons of the MAGEA genes show considerable variability, suggesting that the existence of this gene family enables the same function to be expressed under different transcriptional controls. The MAGEA genes are clustered at chromosomal location Xq28. They have been implicated in some hereditary disorders, such as dyskeratosis congenita.