

RFC4 Polyclonal Antibody

Catalog No. E-AB-60987

Note: Centrifuge before opening to ensure complete recovery of vial contents.

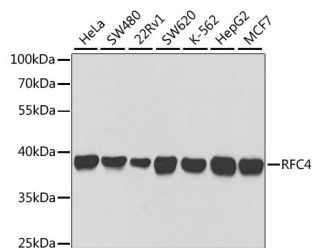
Description

Reactivity	Human,Rat
Immunogen	Recombinant fusion protein of human RFC4
Host	Rabbit
Isotype	IgG
Purification	Affinity purification
Conjugation	Unconjugated
Buffer	PBS with 0.02% sodium azide,50% glycerol,pH7.3.

Applications Recommended Dilution

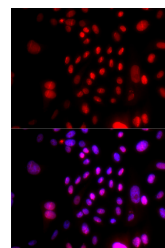
WB	1:500-1:2000
IF	1:50-1:100

Data

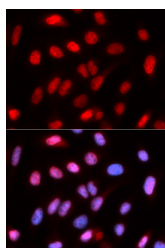


Western blot analysis of extracts of various cell lines using RFC4 Polyclonal Antibody at 1:1000 dilution.

Observed Mw:40kDa
Calculated Mw:33kDa/39kDa



Immunofluorescence analysis of U2OS cells using RFC4 Polyclonal Antibody Blue: DAPI for nuclear staining.



Immunofluorescence analysis of U2OS cells using RFC4 Polyclonal antibody. Blue: DAPI for nuclear staining.

Preparation & Storage

Storage Store at -20°C. Avoid freeze / thaw cycles.

For Research Use Only

Background

The elongation of primed DNA templates by DNA polymerase delta and DNA polymerase epsilon requires the accessory proteins proliferating cell nuclear antigen (PCNA) and replication factor C (RFC). RFC, also named activator 1, is a protein complex consisting of five distinct subunits of 140, 40, 38, 37, and 36 kD. This gene encodes the 37 kD subunit. This subunit forms a core complex with the 36 and 40 kDa subunits. The core complex possesses DNA-dependent ATPase activity, which was found to be stimulated by PCNA in an in vitro system. Alternatively spliced transcript variants encoding the same protein have been reported.

For Research Use Only