

## FZR1 Polyclonal Antibody

**Catalog No.** E-AB-61804

*Note:* Centrifuge before opening to ensure complete recovery of vial contents.

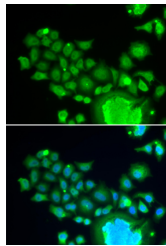
### Description

<b>Reactivity</b>	Human,Mouse
<b>Immunogen</b>	Recombinant fusion protein of human FZR1 (NP_057347.2).
<b>Host</b>	Rabbit
<b>Isotype</b>	IgG
<b>Purification</b>	Affinity purification
<b>Conjugation</b>	Unconjugated
<b>Buffer</b>	PBS with 0.02% sodium azide, 50% glycerol, pH7.3.

### Applications Recommended Dilution

**IF** 1:50-1:200

### Data



Immunofluorescence analysis of HeLa cells using FZR1 Polyclonal Antibody

### Preparation & Storage

**Storage** Store at -20°C. Avoid freeze / thaw cycles.

### Background

FZR1 (Fizzy And Cell Division Cycle 20 Related 1) is a Protein Coding gene. Diseases associated with FZR1 include Breast Cancer. Among its related pathways are Regulation of activated PAK-2p34 by proteasome mediated degradation and Cell cycle\_Role of APC in cell cycle regulation. An important paralog of this gene is CDC20.

### For Research Use Only