

SKIV2L2 Polyclonal Antibody

Catalog Number:E-AB-61020

Note: Centrifuge before opening to ensure complete recovery of vial contents.

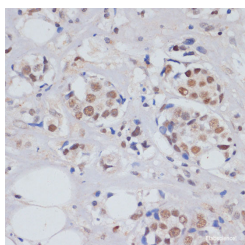
Description

Reactivity	Human,Mouse
Immunogen	Recombinant fusion protein of human SKIV2L2 (NP_056175.3).
Host	Rabbit
Isotype	IgG
Purification	Affinity purification
Conjugation	Unconjugated
Formulation	PBS with 0.02% sodium azide, 50% glycerol, pH7.3.

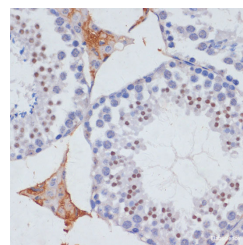
Applications Recommended Dilution

IHC	1:50-1:200
------------	------------

Data



Immunohistochemistry of paraffin-embedded Human breast cancer using SKIV2L2 Polyclonal Antibody at dilution of 1:100 (40x lens).



Immunohistochemistry of paraffin-embedded Mouse testis using SKIV2L2 Polyclonal Antibody at dilution of 1:100 (40x lens).

Preparation & Storage

Storage	Store at -20°C. Avoid freeze / thaw cycles.
----------------	---

Background

MTREX (Mtr4 Exosome RNA Helicase) is a Protein Coding gene. Diseases associated with MTREX include Posterior Myocardial Infarction and Robinow Syndrome, Autosomal Dominant 1. Among its related pathways are rRNA processing in the nucleus and cytosol and Gene Expression. An important paralog of this gene is SKIV2L.

For Research Use Only

A Reliable Research Partner in Life Science and Medicine

Toll-free: 1-888-852-8623

Web: www.elabscience.com

Tel: 1-832-243-6086

Email: techsupport@elabscience.com

Fax: 1-832-243-6017