

LC3B Polyclonal Antibody

Catalog No. E-AB-63824

Note: Centrifuge before opening to ensure complete recovery of vial contents.

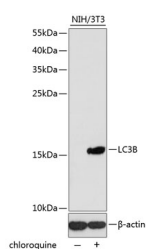
Description

Reactivity	Human, Mouse, Rat
Immunogen	A synthetic peptide of human LC3B (NP_073729.1).
Host	Rabbit
Isotype	IgG
Purification	Affinity purification
Conjugation	Unconjugated
Buffer	PBS with 0.02% sodium azide, 50% glycerol, pH7.3.

Applications Recommended Dilution

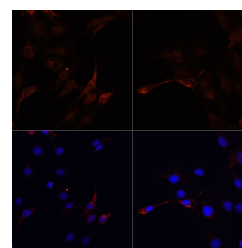
WB 1:500-1:2000 IF
1:50-1:200

Data

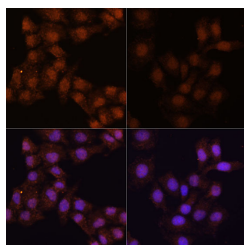


Western blot analysis of extracts of NIH/3T3 cells using LC3B Polyclonal Antibody at dilution of 1:1000. NIH/3T3 cells were treated by Chloroquine (50 μ M) for 20 hours.

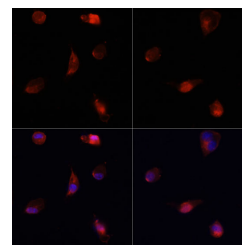
Observed Mw:14kDa/16kDa
Calculated Mw:14kDa



Immunofluorescence analysis of C6 cells using LC3B Polyclonal Antibody at dilution of 1:100. C6 cells were treated by Chloroquine (50 μ M) for 20 hours(left). Blue: DAPI for nuclear staining.



Immunofluorescence analysis of HeLa cells using LC3B Polyclonal Antibody at dilution of 1:100. HeLa cells were treated by Chloroquine (50 μ M) for 20 hours(left). Blue: DAPI for nuclear staining.



Immunofluorescence analysis of NIH/3T3 cells using LC3B Polyclonal Antibody at dilution of 1:100. NIH/3T3 cells were treated by Chloroquine (50 μ M) for 20 hours(left). Blue: DAPI for nuclear staining.

For Research Use Only

Preparation & Storage

Storage Store at -20°C. Avoid freeze / thaw cycles.

Background

The product of this gene is a subunit of neuronal microtubule-associated MAP1A and MAP1B proteins, which are involved in microtubule assembly and important for neurogenesis. Studies on the rat homolog implicate a role for this gene in autophagy, a process that involves the bulk degradation of cytoplasmic component.