

Elab Fluor® Red 780 Anti-Mouse CD25 Antibody[PC-61.5.3]

Catalog No.	E-AB-F1102S	Reactivity	Mouse
Storage	Store at 2~8°C, Avoid freeze / thaw cycles	Applications	FCM

Important Note: Centrifuge before opening to ensure complete recovery of vial contents.

Antigen Information

Alternate Names	Interleukin-2 receptor subunit alpha,IL2RA,IL-2 receptor subunit alpha,IL-2-RA,IL-2R subunit alpha,IL2-RA,TAC antigen,p55,p55
Uniprot ID	P01590
Gene ID	16184
Background	CD25 is a 55 kD glycoprotein, also known as the low affinity IL-2R α , Ly-43, p55, or Tac. It is expressed on activated T and B cells, thymocyte subset, pre-B cells, and T regulatory cells. In association with CD122 (IL-2R β) and CD132(common γ chain), CD25 forms the high affinity signaling IL-2 receptor.

Product Details

Form	Liquid
Size	50Tests/100Tests/100Tests \times 2
Clone No.	PC-61.5.3
Host	Rat
Isotype	Rat IgG1, κ
Reactivity	Mouse
Application	FCM
Isotype Control	Elab Fluor® Red 780 Rat IgG1, κ Isotype Control[HRPN] [Product E-AB-F09822S]
Storage Buffer	Phosphate buffered solution, pH 7.2, containing 0.09% stabilizer and 1% protein protectant.
Shipping	Biological ice pack at 4 °C
Stability & Storage	Keep as concentrated solution. Store at 2~8°C and protected from prolonged exposure to light.Do not freeze. This product is guaranteed up to one year from purchase.

Fluorophore

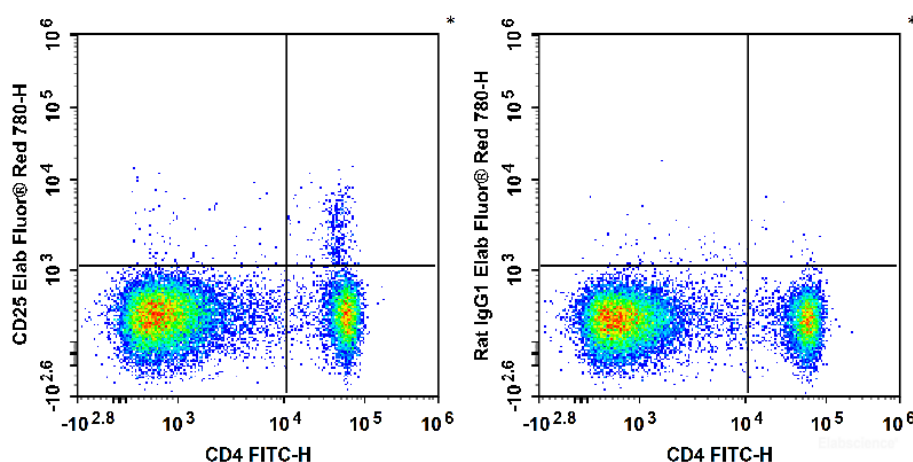
Conjugation: Elab Fluor® Red 780

Elab Fluor® Red 780 is designed to be excited by the Red (627-640 nm) laser and detected using an optical filter centered near 770 nm (e.g., a 780/60 nm bandpass filter).

Recommended usage

Each lot of this antibody is quality control tested by flow cytometric analysis. **The amount of the reagent is suggested to be used 5 µL of antibody per test (million cells in 100 µL staining volume or per 100 µL of whole blood).** Please check your vial before the experiment. Since applications vary, the appropriate dilutions must be determined for individual use.

Product data



C57BL/6 murine splenocytes are stained with FITC Anti-Mouse CD4 Antibody and Elab Fluor® Red 780 Anti-Mouse CD25 Antibody (Left). Splenocytes are stained with FITC Anti-Mouse CD4 Antibody and Elab Fluor® Red 780 Rat IgG1, κ Isotype Control (Right).

Related Information

1. Sample Preparation for Flow Cytometry <https://www.elabscience.com/List-detail-5594.html>
2. Staining Cell Surface Targets for Flow Cytometry <https://www.elabscience.com/List-detail-5568.html>
3. Flow Cytometry Troubleshooting Tips <https://www.elabscience.com/List-detail-5593.html>
4. How to select the appropriate detection channel through the spectrogram? <https://www.elabscience.com/List-detail-459742.html>