

## PSMB4 Polyclonal Antibody

**Catalog No.** E-AB-61073

*Note:* Centrifuge before opening to ensure complete recovery of vial contents.

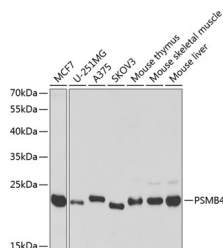
### Description

<b>Reactivity</b>	Human,Mouse,Rat
<b>Immunogen</b>	Recombinant fusion protein of human PSMB4
<b>Host</b>	Rabbit
<b>Isotype</b>	IgG
<b>Purification</b>	Affinity purification
<b>Conjugation</b>	Unconjugated
<b>Buffer</b>	PBS with 0.02% sodium azide,50% glycerol,pH7.3.

### Applications Recommended Dilution

**WB** 1:500-1:2000

### Data



Western blot analysis of extracts of various cell lines using PSMB4 Polyclonal Antibody at 1:1000 dilution.

**Observed Mw:22kDa**  
**Calculated Mw:29kDa**

### Preparation & Storage

**Storage** Store at -20°C. Avoid freeze / thaw cycles.

### Background

The proteasome is a multicatalytic proteinase complex with a highly ordered ring-shaped 20S core structure. The core structure is composed of 4 rings of 28 non-identical subunits; 2 rings are composed of 7 alpha subunits and 2 rings are composed of 7 beta subunits. Proteasomes are distributed throughout eukaryotic cells at a high concentration and cleave peptides in an ATP/ubiquitin-dependent process in a non-lysosomal pathway. An essential function of a modified proteasome, the immunoproteasome, is the processing of class I MHC peptides. This gene encodes a member of the proteasome B-type family, also known as the T1B family, that is a 20S core beta subunit.

### For Research Use Only